

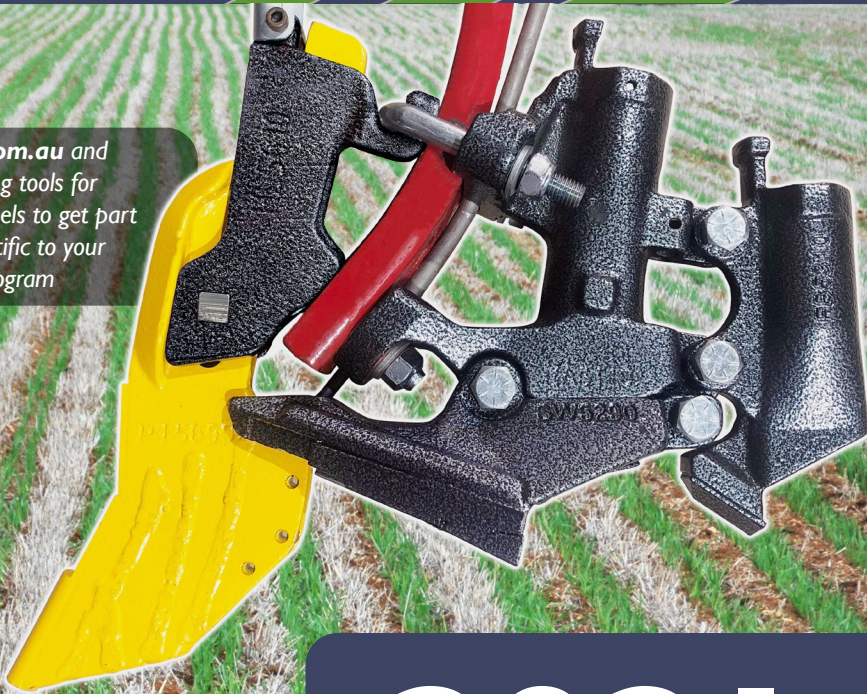


# AGMASTER

HARRINGTON® NO-TILL

 **1800 NO TILL**

Visit [www.agmaster.com.au](http://www.agmaster.com.au) and use one of our kit building tools for Seeding Kits or Presswheels to get part numbers and prices specific to your machine and seeding program



**ADJUSTA-POINT**  
Our longer wearing height-adjustable point. See pages 3-7

# 2021

**PRODUCTS AND PRICES**

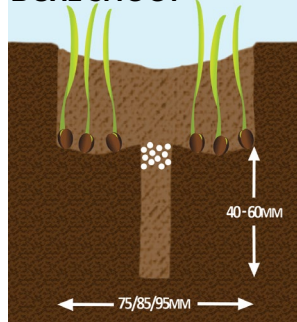
*Effective 1st January 2021*

- **NO-TILL SEEDING KITS**
- **PRESSWHEELS**
- **HARROWS**

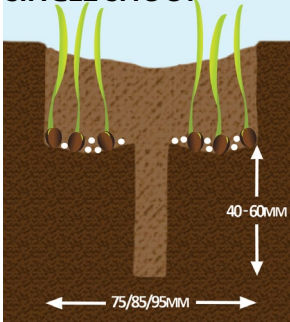
# AGMASTER SEEDING PROFILES

## Paired-Row Seeker Boots

### DUAL SHOOT



### SINGLE SHOOT



### SEEDING KITS/BOOTS:

NT19 Multi-Boot C-Shank

SW5290/SW5270

**P4, 6-7**

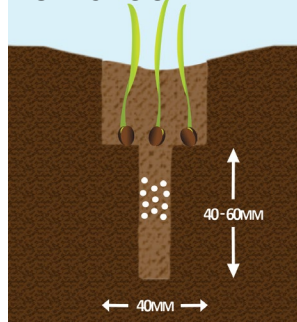
Multi-Boot Module

SW6290/SW6270

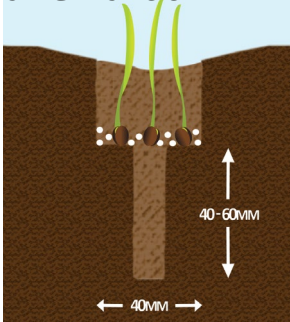
**P8-11**

## Single-Row Flexi-Boots

### DUAL SHOOT



### SINGLE SHOOT



### SEEDING KITS/BOOTS:

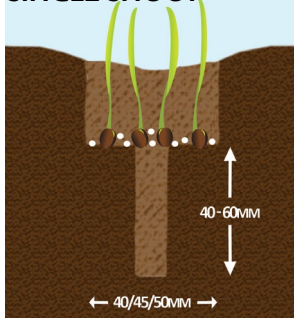
NT19 Flexi-Boot

FB2840

**P5**

## Single-Row Rigid Boots

### SINGLE SHOOT



### SEEDING KITS/BOOTS:

NT19 Multi-Boot

CL5240

**P4, 6-7**

NT19 Rigid Boot

BT2540/BT2550

**P5, 13**

Multi-Boot Module

CL6240

**P8-11**

For all Seeding Kit part numbers and their prices, use our Seeding Kit Builder at [www.agmaster.com.au](http://www.agmaster.com.au)

All prices exclude any freight costs that may apply

## ADJUSTA-POINT AND HOLDER

We have now had the Adjusta-Point & Holder system in use for the past three seasons during which time we have received positive feedback regarding point life and security of point holder fastening.

The key features of the Adjusta-Point and Holder system are:

- Height adjustable with three different heights to allow for lowering of point as it wears or for more below the seed cultivation if desired
- Compatible with current range of boot assemblies such as Multi-Boot and NT19 Rigid & Flexi-boots as pictured on pages 4 - 5.
- Compatible for use with our NT11 Rigid Seeding Boots
- New dowel shape tungsten to increase point life and reduce chipping
- Easy access 12mm pin & R-clip
- More secure optional trashguard design which doesn't affect access to point retaining pin
- Improved bolting arrangement for point holder which is now secured with a u-bolt to help prevent sideways movement of holder if tyne bolts become loose or worn
- Liquid point option available

See pages 14 & 16 for spare parts and accessories such as trashguards and liquid kits



For all Seeding Kit part numbers and their prices, use our Seeding Kit Builder at [www.agmaster.com.au](http://www.agmaster.com.au)

All prices exclude any freight costs that may apply



## NT19 SEEDING KITS FOR C-SHANK TYNES

The seeding kits pictured on pages 4 & 5 suit a range of Double-Bolt C-Shank tynes. Each series has options available to suit standard 50mm Flat tynes as well as 30mm Edge-On tynes.



### PICTURED:

#### **Dual Shoot Paired Row w Liquid**

- Liquid Lo-Thro 14mm Adjusta-Point
- 95mm Paired Row Seeker Wing
- Dual Shoot Dry Fertiliser Boot

### NT19 Paired-Row Multi-Boot Kits

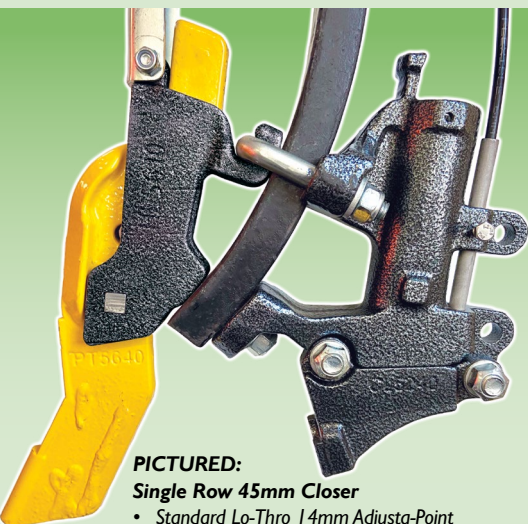
- Height-adjustable point. Standard and Liquid options
- Modular boot. Easily interchange between paired-row and single-row
- Suits both single-shoot & dual-shoot programs
- Good capability for directing liquid behind the point
- Provision for wetter with seed in each paired row

For more detailed information about the Multi-Boot system see pages 6 - 7

### PRICE:

Kit as pictured **\$362+GST**

*More kit options and prices can be found on page 7*



### PICTURED:

#### **Single Row 45mm Closer**

- Standard Lo-Thro 14mm Adjusta-Point
- 45mm Single-Row Closer
- Wetter w Seed tube (ordered separately)

### NT19 Single-Row Multi-Boot Kits

- Height adjustable point. Standard & Liquid options.
- Modular Boot Easily interchange between paired-row and single-row
- Good capability for directing liquid behind the point
- Provision for wetter with the seed

For more detailed information about the Multi-Boot system see pages 6 - 7

### PRICE:

Kit as shown **\$201+GST**

*Wetter with seed tube not included in kit, ordered separately*

*More kit options and prices can be found on page 7*

For all Seeding Kit part numbers and their prices, use our Seeding Kit Builder at **[www.agmaster.com.au](http://www.agmaster.com.au)**

*All prices exclude any freight costs that may apply*

## NT19 SEEDING KITS FOR C-SHANK TYNES

The seeding kits pictured on pages 4 & 5 suit a range of Double-Bolt C-Shank tynes. Each series has options available to suit standard 50mm Flat tynes as well as 30mm Edge-On tynes.



**PICTURED:**

**Dual Shoot Flexiboot**

- Standard Lo-Thro 14mm Adjusta-Point
- 40mm Flexi-Boot

### NT19 Flexi-Boot Kits

*Progression of our NT11 Series*

- Height-adjustable point. Standard and Liquid options
- The seeding boot is a stiff but flexible hose with 40mm closer plate which self-cleans in heavy soils
- Suits both single-shoot & dual shoot programs
- Allows banding of fertiliser in knife point slot when dual shooting
- 50mm closer available for wider spread in light soils

**PRICE:**

Standard Kit as pictured **\$245** +GST



**PICTURED:**

**Single Shoot 50mm Rigid Boot**

- Standard Lo-Thro 14mm Adjusta-Point
- 50mm Single-Shoot Boot

### NT19 Rigid Boot Kits

*Progression of our NT11 Series*

- Height-adjustable point. Standard and Liquid options
- Height-adjustable boot
- Multiple boot options to suit both single-shoot & dual shoot programs (see p13)
- Choice of 40mm 50mm closer on single-shoot boot (pictured)
- Improved bolt accessibility on bracket at back of tyne
- Weld-on closer plates available for self-repair

**PRICE:**

Standard Kit as pictured **\$191** +GST

See page 15 for other boot options and kit price difference.

For all Seeding Kit part numbers and their prices, use our Seeding Kit Builder at **[www.agmaster.com.au](http://www.agmaster.com.au)**

All prices exclude any freight costs that may apply

## MULTI BOOT C-SHANK

The Multi-Boot seeding system is a modular system for double-bolt c-shank tynes which allows flexibility to choose between multiple paired-row and single-row closing tool options as well as point and holder style. The key features of this system are:

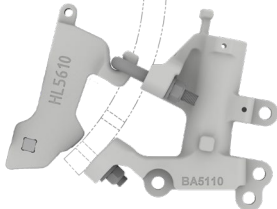
- Multiple closing tool options with flexibility to easily alternate between paired and single-row depending on conditions and crop type. The options are:
  - 95mm Paired Row Seeker Wing
  - 75mm Paired Row Seeker Wing
  - 45mm Single Row Closer
- Compatible with both Adjusta-Point and NTII Point & Holder systems
- Optional dry fertiliser boot is available for dual shoot systems
- There is provision for liquid down the point slot and and/or wetter with the seed
- A secure bolting arrangement on the closing tool and dry fertiliser boot
- Bracket options to suit 50mm Flat tynes and 30mm Edge-On tynes

For a complete kit price, add price of your preferred point and closer option to either the standard or liquid base price. Alternatively, see page 7 for common configurations and their prices

**NOW HAS  
WETTER WITH SEED  
CAPABILITIES ON  
BOTH PAIRED-ROW &  
SINGLE-ROW  
SYSTEMS!**

### Kit Base Price

**\$90 +GST Standard**  
**\$100 +GST Liquid**



### FB5310

Optional Dual  
Shoot Dry  
Fertiliser Boot  
**\$42 +GST**

### Point Options

#### PT5640

Adjusta-Point  
Standard 14mm  
**\$69 +GST**



#### PT5650

Adjusta-Point  
Liquid 14mm  
**\$90 +GST**



### Closing Tool Options



#### SW5290

95mm Paired Row Seeker Wing  
(rows 75mm apart)  
**\$130 +GST**



#### SW5270

75mm Paired Row Seeker Wing  
(rows 55mm apart)  
**\$125 +GST**



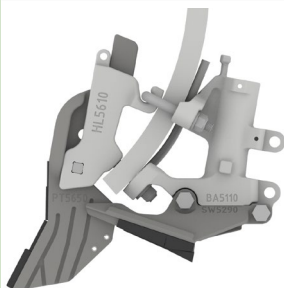
#### CL5240

45mm Single Row Closer  
**\$42 +GST**

# ADJUSTA POINT & MULTI BOOT ASSEMBLIES

The seeding assemblies below include the parts pictured as well as all bolts and fasteners required for assembly. **Please note that X's in part #'s need to be filled with a figure depending on machine type, tyne type & seeker width (if applicable).** For assistance please contact Agmaster, your local dealer or use the Seeding Kit Builder [www.agmaster.com.au](http://www.agmaster.com.au)

## Adjusta-Point & Multi-Boot for C-Shank Tyres



### PMB651x2x

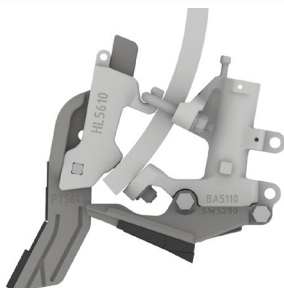
Liquid Adjusta-Point with Paired Row Seeker Wing

#### 95mm Seeker

**\$320** +GST

#### 75mm Seeker

**\$315** +GST



### PMB641x2x

Standard Adjusta-Point with Paired Row Seeker Wing

#### 95mm Seeker

**\$289** +GST

#### 75mm Seeker

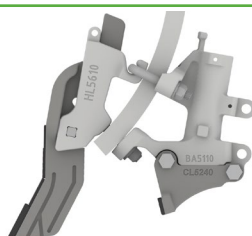
**\$284** +GST



### PMB651x24

Liquid Adjusta-Point with Single Row 45mm Closer

**\$232** +GST



### PMB641x24

Standard Adjusta-Point with Single Row 45mm Closer

**\$201** +GST



### BMB1x29

Boot only with 95mm Seeker Wing

**\$200**+GST



### BMB1x27

Boot only with 75mm Seeker Wing

**\$195** +GST



### BMB1x24

Boot only with 45mm Closer

**\$112**+GST



### FB5310

Dual Shoot Dry Fertiliser Boot

**\$42**+GST

To add to any paired row kit, add 31 to end of part # and increase kit price

For all Seeding Kit part numbers and their prices, use our Seeding Kit Builder at [www.agmaster.com.au](http://www.agmaster.com.au)

All prices exclude any freight costs that may apply

# MULTI-BOOT MODULE FOR MORRIS QUANTUM & C2

This system is a progression of our “Kwik Fit Module” seeding kit to which we have made a few key changes in order to improve the quality and functionality of the product. The key features of this system are:

- Multiple closing tool options with flexibility to easily alternate between them depending on conditions and crop type. The options are:
  - 95mm Paired Row Seeker Wing
  - 75mm Paired Row Seeker Wing
  - 45mm Single Row Closer
- A more secure bolting arrangement on the closing tool and dry fertiliser boot
- Height-adjustable point is now secured with a pin instead of a bolt and there is no load on the pin
- The design of the point has been changed to make changing points easier
- The boot adaptor has been strengthened in areas to reduce wear and tear
- New tungsten shape on the point

For a complete kit price, add price of your preferred closer option to either the standard or liquid base price. Alternatively, see page 9 for common configurations and their prices

**NOW HAS  
WETTER WITH SEED  
CAPABILITIES ON  
BOTH PAIRED-ROW &  
SINGLE-ROW  
SYSTEMS!**

**Kit Base Price  
Point Included**  
**\$199** +GST Standard  
**\$225** +GST Liquid

## Point Options

**PT6640**  
14mm Standard  
Point  
**\$69** +GST

**PT6650**  
14mm Liquid  
Point  
**\$90** +GST

## Closing Tool Options

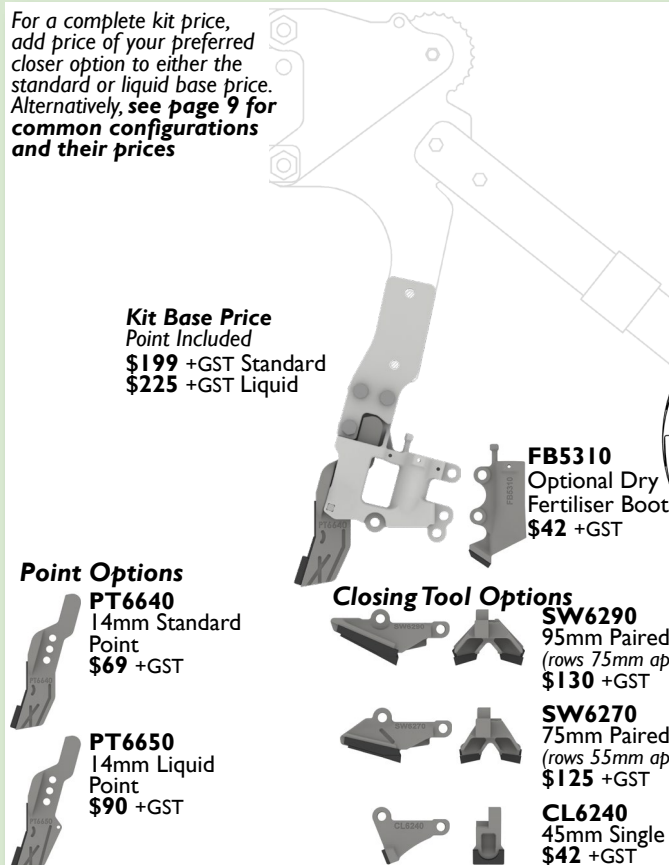
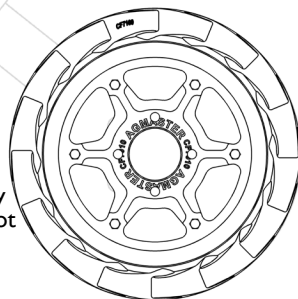
**FB5310**  
Optional Dry  
Fertiliser Boot  
**\$42** +GST

**SW6290**  
95mm Paired Row Seeker Wing  
(rows 75mm apart)  
**\$130** +GST

**SW6270**  
75mm Paired Row Seeker Wing  
(rows 55mm apart)  
**\$125** +GST

**CL6240**  
45mm Single Row Closer  
**\$42** +GST

Emu Tracker Wheel. Info on P13



For all Seeding Kit part numbers and their prices, use our Seeding Kit Builder at [www.agmaster.com.au](http://www.agmaster.com.au)

All prices exclude any freight costs that may apply



## Multi Boot for Morris Quantum & Contour 2 Seeding Assemblies



### **PMM65182X31**

14mm Liquid Adjustable Point with Paired Row Seeker Wing, Dry Fertiliser Boot and Stainless Liquid Casing

#### **95mm Seeker**

**\$397** +GST

#### **75mm Seeker**

**\$392** +GST



### **PMM64182X31**

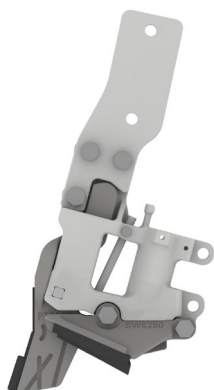
14mm Adjustable Point with Paired Row Seeker Wing and Dry Fertiliser Boot

#### **95mm Seeker**

**\$371** +GST

#### **75mm Seeker**

**\$366** +GST



### **PMM65182X**

14mm Liquid Adjustable Point with Paired Row Seeker Wing and Stainless Liquid Casing

#### **95mm Seeker**

**\$355** +GST

#### **75mm Seeker**

**\$350** +GST



### **PMM64182X**

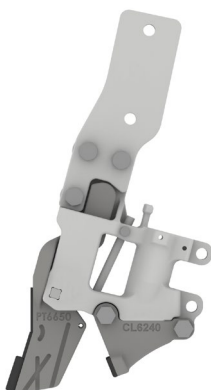
14mm Adjustable Point with 75mm Paired Row Seeker Wing

#### **95mm Seeker**

**\$329** +GST

#### **75mm Seeker**

**\$324** +GST



### **PMM651824**

14mm Liquid Point with 45mm Single Row Closer and Stainless Liquid Casing

**\$267** +GST



### **PMM641824**

14mm Standard Point with 45mm Single Row Closer

**\$241** +GST

For all Seeding Kit part numbers and their prices, use our Seeding Kit Builder at [www.agmaster.com.au](http://www.agmaster.com.au)

All prices exclude any freight costs that may apply

# MULTI-BOOT MODULE FOR BOURGAULT PARALINK

This system is a progression of our “Kwik Fit Module” seeding kit to which we have made a few key changes in order to improve the quality and functionality of the product. The key features of this system are:

- Multiple closing tool options with flexibility to easily alternate between them depending on conditions and crop type. The options are:
  - 95mm Paired Row Seeker Wing
  - 75mm Paired Row Seeker Wing
  - 45mm Single Row Closer
- A more secure bolting arrangement on the closing tool and dry fertiliser boot
- Point is now secured with a pin instead of a bolt and there is no load on the pin
- The design of the point has been changed to make changing points easier
- The boot adaptor has been strengthened in areas to reduce wear and tear.
- New tungsten shape on the point

For a complete kit price, add price of your preferred closer option to either the standard or liquid base price. Alternatively, see page 11 for common configurations and their prices

## Kit Base Price Point Included

**\$224** +GST Standard

**\$250** +GST Liquid

## Point Options

**PT6640**  
14mm Standard  
Point  
**\$69** +GST

**PT6650**  
14mm Liquid  
Point  
**\$90** +GST

## Closing Tool Options

**FB5310**  
Optional Dry  
Fertiliser Boot  
**\$42** +GST

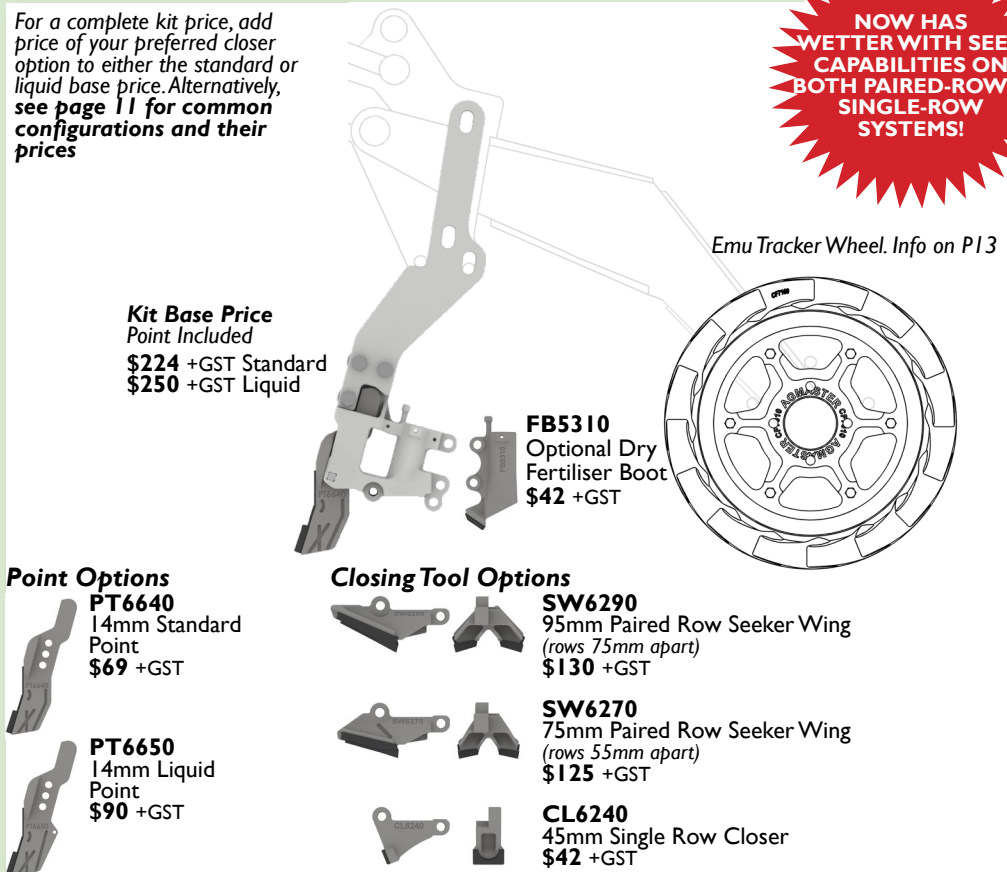
**SW6290**  
95mm Paired Row Seeker Wing  
(rows 75mm apart)  
**\$130** +GST

**SW6270**  
75mm Paired Row Seeker Wing  
(rows 55mm apart)  
**\$125** +GST

**CL6240**  
45mm Single Row Closer  
**\$42** +GST

Emu Tracker Wheel. Info on P13

**NOW HAS  
WETTER WITH SEED  
CAPABILITIES ON  
BOTH PAIRED-ROW &  
SINGLE-ROW  
SYSTEMS!**



For all Seeding Kit part numbers and their prices, use our Seeding Kit Builder at [www.agmaster.com.au](http://www.agmaster.com.au)

All prices exclude any freight costs that may apply

## Multi Boot for Bourgault Paralink Seeding Assemblies



### **PMM65192X3I**

14mm Liquid  
Adjustable Point with  
Paired Row Seeker  
Wing, Dry Fertiliser  
Boot and Stainless  
Liquid Casing

### **95mm Seeker**

**\$422** +GST

### **75mm Seeker**

**\$417** +GST



### **PMM65192X**

14mm Liquid  
Adjustable Point with  
Paired Row Seeker  
Wing and  
Stainless Liquid Casing

### **95mm Seeker**

**\$380** +GST

### **75mm Seeker**

**\$375** +GST



### **PMM651924**

14mm Liquid Point  
with 45mm Single Row  
Closer and Stainless  
Liquid Casing

**\$292** +GST



### **PMM64192X3I**

14mm Adjustable  
Point with Paired Row  
Seeker Wing and Dry  
Fertiliser Boot

### **95mm Seeker**

**\$396** +GST

### **75mm Seeker**

**\$391** +GST



### **PMM64192X**

14mm Adjustable Point  
with Paired Row  
Seeker Wing

### **95mm Seeker**

**\$354** +GST

### **75mm Seeker**

**\$349** +GST



### **PMM641924**

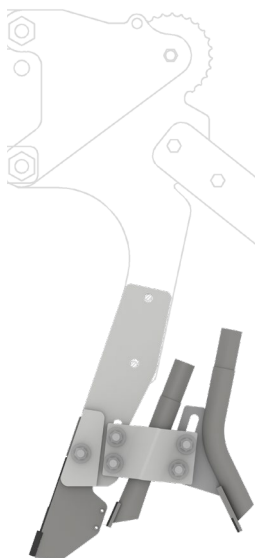
14mm Standard Point  
with 45mm Single Row  
Closer

**\$266** +GST

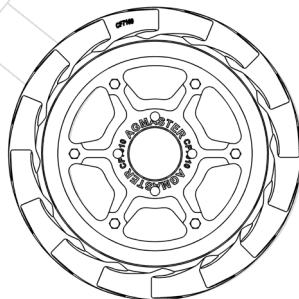
## DUAL IN-LINE FOR MORRIS QUANTUM & C2/C3

**Our Dual In-Line** system for the Morris Quantum & Contour 2 was developed in response to demand for dual-shoot single row in-line systems for these machines. We have been running these in the field for the last two seasons with positive results. Seeding Kits include 12mm height-adjustable point(liquid option available), seed & fertiliser boots and all bolts and fasteners.

### Dual In-Line Seeding Kits



Emu Tracker Wheel. Info on P13



#### Complete Kit Prices

Kits include point, leg, seed boot, fertiliser boot & all bolts and fasteners required

#### PMI063554

Standard Point Kit

**\$310** +GST

**PMI073554** *(pictured)*  
Liquid Point Kit

**\$323** +GST

#### Replacement Points

##### PT5060

12mm Standard Adjustable Point

**\$65** +GST



##### PT5070

12mm Liquid Adjustable Point

**\$78** +GST



*All prices exclude any freight costs that may apply*



# EMU TRACKER WHEELS

**Our Emu Tracker wheels** have a unique design which addresses the issue of presswheel furrow smearing on parallelogram seeding modules such as the following (other makes may also be adaptable):

- Morris Quantum
- Morris Contour 2
- Bourgault Paralink
- Horsch Sprinter
- Flexicoil PD5700

The Emu Tracker replaces the existing wheel on the module. The flexible feet flick some of the loose soil back into the seeding row while giving some pressing effect. They are most effective in moist soil conditions.

**\$220** +GST



## Emu Tracker Finish Comparison



*Original Module Wheel Finish*



*Emu Tracker Wheel Finish*



*Pictured is a Morris Contour 2 with Agmaster Seeding Kits (P8 - P9) & Emu Tracker Wheels. Photo courtesy of Wiesners Machinery Dealership in Walla Walla, NSW*

## REPLACEMENT POINTS

### Adjusta-Point & Holder



**PT5640**  
Adjusta-Point  
Standard 14mm  
**\$69** +GST



**PT5650**  
Adjusta-Point  
Liquid 14mm  
**\$90** +GST



**HL5610**  
Adjusta-Point  
Holder 2021  
**\$20** +GST

### NTI I Series Slip-On Point Options



**PT1120**  
12mm Standard  
**\$57** +GST



**PT1150**  
12mm Liquid  
**\$75** +GST



**PT1140**  
14mm Lo-Thro  
**\$64** +GST



**PT1170**  
14mm Lo-Thro Liquid  
**\$82** +GST



**PT1160**  
16mm Standard  
**\$64** +GST



**PT1190**  
16mm Liquid  
**\$82** +GST



**PT1130**  
16mm Winged  
**\$90** +GST

*For less common replacement points, boots and other parts,  
please visit our website [www.agmaster.com.au](http://www.agmaster.com.au)*

*All prices exclude any freight costs that may apply*

## OTHER NO-TILL SEEDING KITS AND PARTS



### NT08 Series Bolt-On Kits

For single bolt cultivator and scarifier tynes in the 90 - 150kg breakout range. Standard single system included a 12mm point and depth adjustable 40mm boot assembly. See below for other boot options and kit price difference.

**NT08 Seeding Kits suit the following tynes:**  
Shearer 580 & 620, Forward/Chamberlain 270, 700 & 800 series, Alfarm, John Deere/International Scari & Shearer Scari

### PRICES:

Standard Single Shoot Kit as shown **\$153** +GST

Replacement Points **\$56** +GST

## NT08/NT11/NT19 Series Boots Options (excludes Flexiboots & Seeker Boots)



### BT2540/BT2550

Single Shoot Boot with  
40mm or 50mm Closer  
Plate  
**\$55** +GST

### Standard NT19 Kit

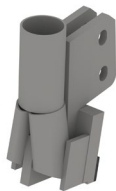
Standard Adjusta-Point  
with choice of BT2540  
or BT2550 boots  
**\$191** +GST

### Standard NT08 Kit

with choice of BT2540  
or BT2550 boots  
**\$153** +GST

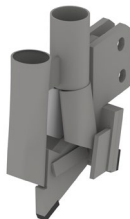
*Picture and details P5*

*Picture and details above*



### BT2370

Single Shoot Split Boot with  
65mm Closer Plate  
**\$95** +GST  
For this boot option in a kit add  
**\$40** +GST to standard single  
system kit price above



### BT2390

Double Shoot Split Boot with  
65mm Closer Plate  
**\$140** +GST  
For this boot option in a kit add  
**\$85** +GST to standard single  
system kit price above

## NT08/NT11/NT19 Series Closer Plates (excludes Flexiboots & Seeker Boots)



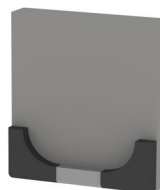
### CL2494

40mm Weld-On  
Closer Plate  
**\$20** +GST



### CL2495

50mm Weld-On  
Closer Plate  
**\$20** +GST



### CL2496

65mm Weld-On  
Closer Plate  
**\$22** +GST

## Accessories

### TRASHGUARDS

These saddle the point holder and secure to the tyne to provide better trashflow in heavy residue. There are two styles for NT11 and Adjusta-Point and suit both flat and edge-on tynes. *Below prices include required fasteners*



Adjusta-Point  
Trashguard  
**\$20 +GST**



NT11  
Trashguard  
**\$25 +GST**

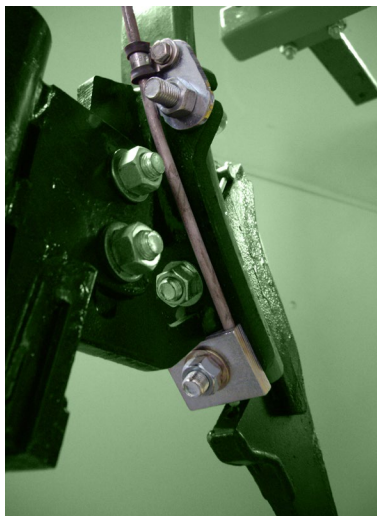
### SWEEP ADAPTORS

These secure into the holder in place of the point for quick change from No-Till cultivation to conventional cultivation. Replicates bottom of tyne to accommodate bolt-on wedge or bolt-on wide point. 3 different hole configurations are available. **Available for NT11 holders only.**



**\$25 +GST**

## Liquid Kits



These kits piggy back Agmaster NT19 & NT11 rigid boot kits. They will direct liquid fertiliser from an existing liquid distribution system to the base of the tynes and into the back of a liquid fertiliser point (see pages 5 & 14). The liquid kit includes a shaped stainless tube that acts as a casing for 3 - 6mm OD flexible fertiliser delivery hose.

Kit does not include liquid point or flexible tube. A longer bolt may also be required to bolt clamp plate to tyne. Kits are available for 2 pipe sizes.

**Single Liquid Kit: \$24 +GST**  
**Double Liquid Kit: \$38 +GST**



## Seeding Kit Notes

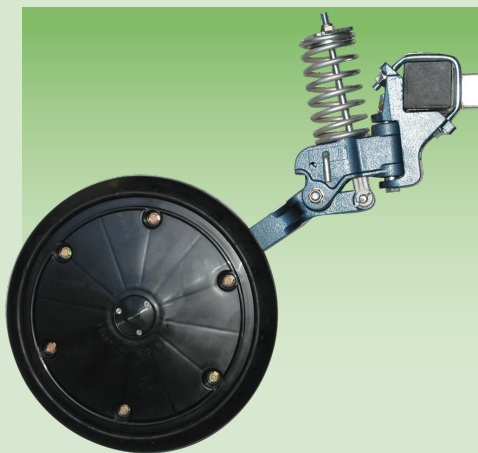


**Visit our website to use our Seeding Kit Builder  
or view our full range of spare parts**

**[www.agmaster.com.au](http://www.agmaster.com.au)**



## PRESSWHEELS



70mm "V" Presswheel Module.  
See page 19 for all tyre profile options

- Individually mounted for independent pressure
- Self tracking
- Semi pneumatic tyres for soil shedding
- Down pressure adjustable
- Can be lifted and locked when not required
- Light weight but robust - module weight 11kg

**WITH  
GREASABLE  
HUBS!**

**Agmaster Presswheels** offer flexibility to suit all seeding conditions. The presswheels mount to a false bar behind the last rank of seeding tyres.

Presswheel module as shown:

**\$375 +GST**

with 50mm Flat, 70mm V or 95mm V tyre profiles

**\$395 +GST**

100mm W tyre profiles

Optional inner spring for extra pressure

**\$15 +GST**

Optional offset wheel spacer for clay shedding

**\$15 +GST**



For all Presswheel Kit part numbers and their prices, use our new Kit Builder at **[www.agmaster.com.au](http://www.agmaster.com.au)**

All prices exclude any freight costs that may apply

# PRESSWHEELS

## Tyre Profile Options



**50mm Flat Tyre**  
Crumbles sides of narrow slot  
**\$375** +GST



**70mm 'V' Tyre**  
General purpose in mixed soil types  
**\$375** +GST



**95mm 'V' Tyre**  
Wide press on light sand soils  
**\$375** +GST



**100mm 'W' Tyre**  
For use with paired row seeker boots  
**\$395** +GST

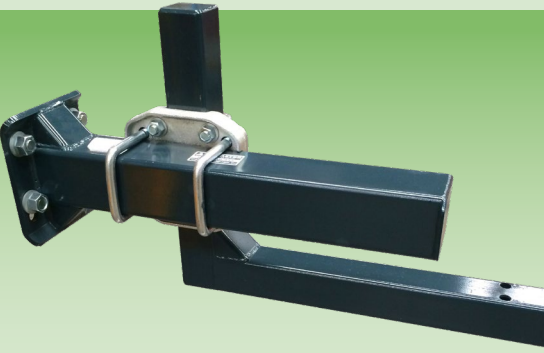
**Suitable tyre profile** will depend on seeding boot style, soil conditions and desired finish.

Seek local experience or contact an Agmaster Sales Consultant for more information. All prices shown are for complete module (*pictured on page 18*) with selected tyre profile option.

For all Presswheel Kit part numbers and their prices, use our new Kit Builder at [www.agmaster.com.au](http://www.agmaster.com.au)

All prices exclude any freight costs that may apply

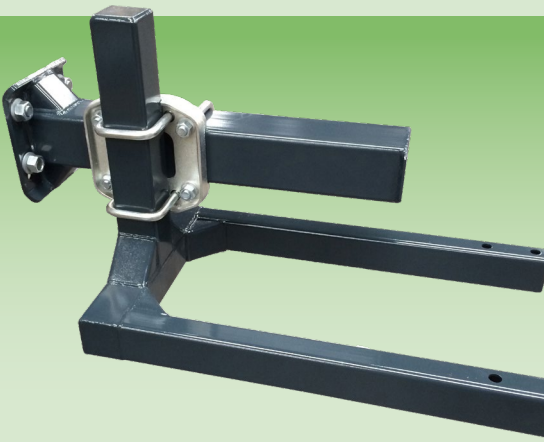
# PRESSWHEEL MOUNTING OPTIONS



## FIXED EXTENSION ARM

Used when presswheels are permanent with provision for an adaptor plate to be welded to end of main arm to add harrows in combination. If no harrows are used, 2 arms are required per section. A 3rd arm is recommended for any section with more than 18 presswheels. Typical single fold machine will require 6 or 7 arms. Mount bar secures to end of these arms. Weight 31kg

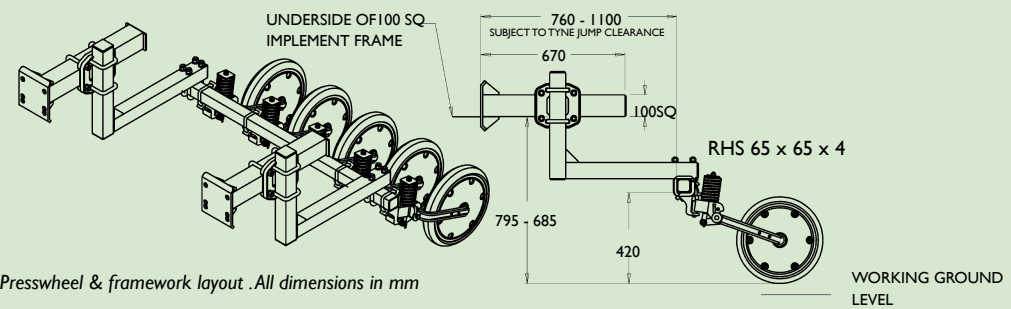
**\$450** +GST



## FIXED EXTENSION ARM WITH DOUBLE DROPPER

Used in conjunction with above arms of short sections of folding machines i.e. 7ft or less with up to 10 presswheels. Typically used on short outer wings of double fold machines. Mount bar secures to end of arm. Weight 38kg

**\$600** +GST



Presswheel & framework layout . All dimensions in mm

For all Presswheel Kit part numbers and their prices, use our new Kit Builder at [www.agmaster.com.au](http://www.agmaster.com.au)  
All prices exclude any freight costs that may apply



## Presswheel Notes

**Visit our website to use our *Presswheel Builder*  
or view our *full range of spare parts***

**[www.agmaster.com.au](http://www.agmaster.com.au)**



## NO-TILL HARROWS



**Agmaster No-Till Harrows** have been developed to compliment no-till seeding systems. Their non-aggressive rotary action is designed to brush loose soil from the interrow back into the seed row. They have excellent trash flow capabilities and can be used independently or in combination with presswheels.

- Easy to set up and use
- Working angle and pressure adjustable
- Lifts and folds with machine
- Excellent stubble handling

**STAR HARROWS** are suitable for covering behind narrow points to provide an even cover. Long life tips are replaceable. 4ft and 5ft gangs will provide the best finish. 6ft gangs are available if other sizes not suitable.

### PRICES:

4ft gang with telecarrier arm **\$1795+GST**  
 5ft gang with telecarrier arm **\$1995+GST**  
 6ft gang with telecarrier arm **\$2195+GST**  
 Replacement Single Star Tips **\$4.50+GST EACH**  
 Replacement Star Tips x100 **\$400+GST**



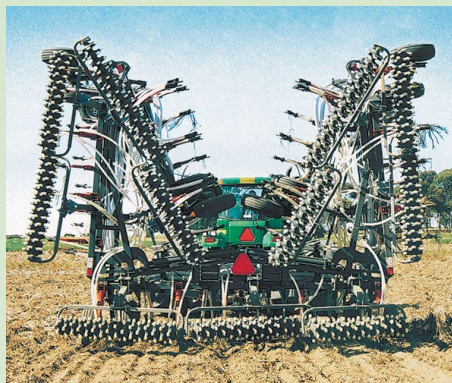
**COIL HARROWS** are suitable for covering behind greater variety of points. Slightly more aggressive, they are more effective in sticky soil conditions.

### PRICES:

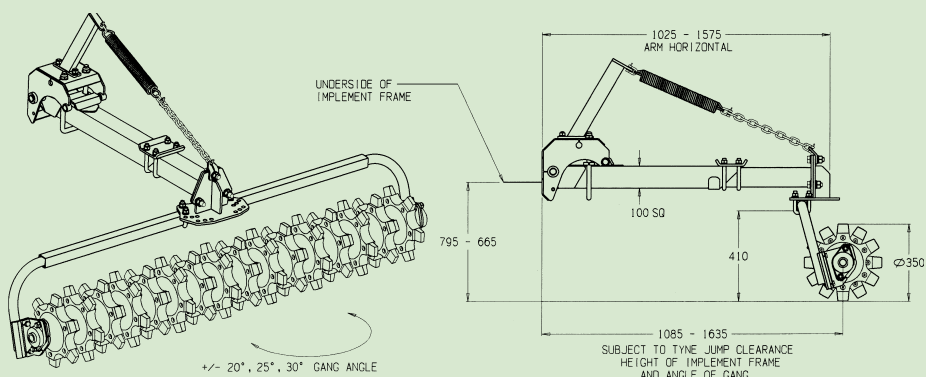
4ft gang with telecarrier arm **\$1795+GST**  
 5ft gang with telecarrier arm **\$1995+GST**



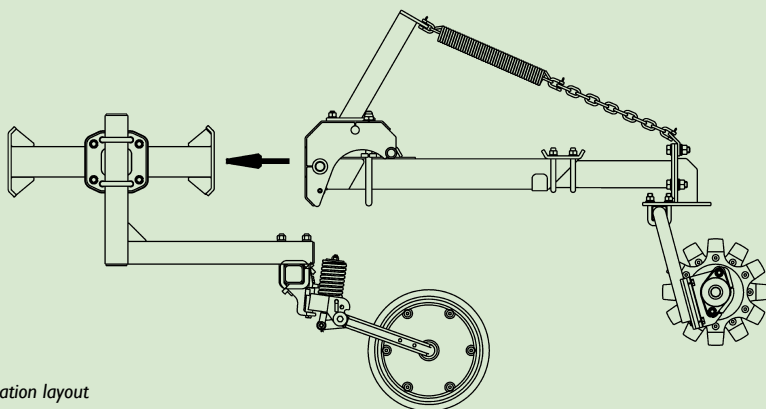
Presswheels and harrows combination



Double fold machine with star harrows



Harrow & telescopic arm layout. All dimensions in mm



Combination layout



Paired Row Seeker Boot establishment



**Western Australia Head Office:**

10 Fargo Way  
WELSHPOOL  
Western Australia 6106

**Phone:** 08 9358 1555

**Fax:** 08 9358 1888

**Email:** [sales@agmaster.com.au](mailto:sales@agmaster.com.au)

**[www.agmaster.com.au](http://www.agmaster.com.au)**

**South Australia**

Renee Attwood  
08 9358 1555  
[renee@agmaster.com.au](mailto:renee@agmaster.com.au)

**Victoria & Tasmania**

Dan Bolwell  
0417 565 091  
[dan@agmaster.com.au](mailto:dan@agmaster.com.au)

**New South Wales & Queensland**

Rowan Cox  
0488 995 566  
[rowan@agmaster.com.au](mailto:rowan@agmaster.com.au)

**Your local dealer is:**

**Disclaimer:** Agmaster strongly recommends that you consult your agronomist to determine the suitability of Agmaster products in your seeding program. Agmaster gives absolutely no guarantee as to the suitability or performance of its products. Furthermore, Agmaster will not accept liability for any loss or damage caused by, or as a consequence of, the use of its products. Agmaster's products and prices are subject to change without notice. E & OE.