



AGMASTER

HARRINGTON® NO-TILL

 1800 NO TILL

NEW

- **EMUTRACKER** individual Presswheel Module **P20**
- NT21D Point & Holder system to suit **DBS** **PI4**



2023

PRODUCTS AND PRICES

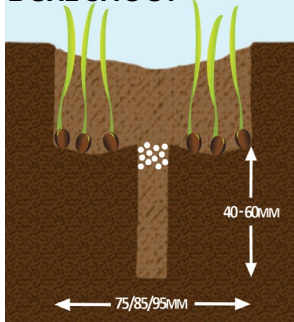
Effective 1st January 2023

- **NO-TILL SEEDING KITS**
- **PRESSWHEELS**
- **HARROWS**

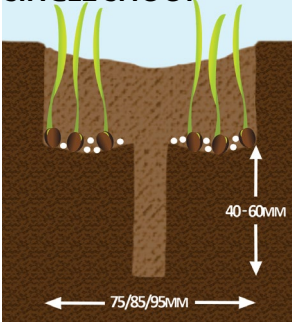
AGMASTER SEEDING PROFILES

Paired-Row Seeker Boots

DUAL SHOOT



SINGLE SHOOT



SEEDING KITS/BOOTS:

NT19 Multi-Boot C-Shank

SW5290/SW5270

P4, 6-7

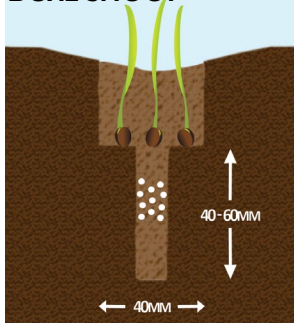
Multi-Boot Module

SW6290/SW6270

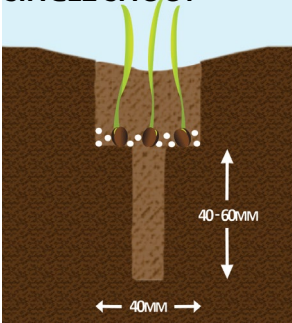
P8-11

Single-Row Flexi-Boots

DUAL SHOOT



SINGLE SHOOT



SEEDING KITS/BOOTS:

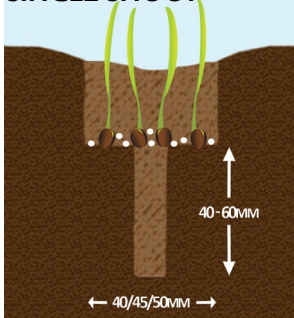
NT19 Flexi-Boot

FB2840

P5

Single-Row Rigid Boots

SINGLE SHOOT



SEEDING KITS/BOOTS:

NT19 Multi-Boot

CL5240

P4, 6-7

NT19 Rigid Boot

BT2540/BT2550

P5, 17

Multi-Boot Module

CL6240

P8-11

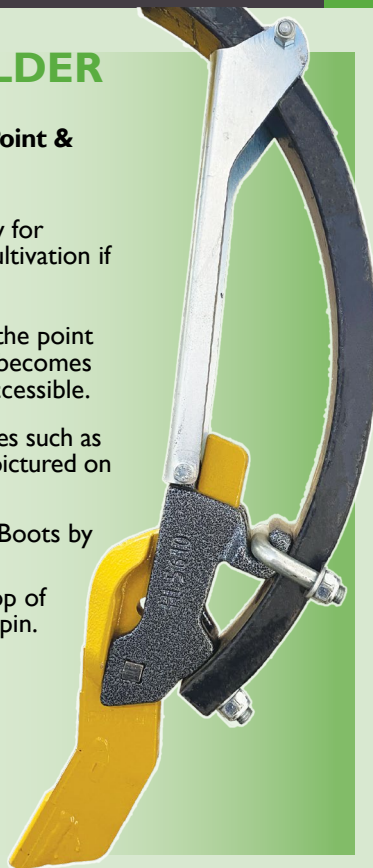
For all Seeding Kit part numbers and their prices, use our Seeding Kit Builder at www.agmaster.com.au

All prices exclude any freight costs that may apply

NT19 ADJUSTA-POINT AND HOLDER

The NT19 Adjusta-Point is our latest and recommended Point & Holder system for C-Shank tyne. The key features are:

- **HEIGHT ADJUSTABLE** with three different settings to allow for lowering of point as it wears or for more below the seed cultivation if desired.
- **SECURE BOLTING ARRANGEMENT** by using a u-bolt for the point holder to help prevent sideways movement if the tyne bolt becomes loose or worn. There is only one tyne bolt which is easily accessible.
- **COMPATIBLE** with current range of Agmaster boot assemblies such as Multi-Boot, NT19 Rigid Boots & Brackets and FlexiBoots as pictured on pages 4 - 5.
- **ADAPTABLE** for use with our popular NT11 Rigid Seeding Boots by using a customised u-bolt.
- **SECURE TRASHGUARD** design which is fixed directly to top of point holder. Design doesn't affect access to point retaining pin. These are included as standard in all NT19 seeding kits.
- **LIQUID** point options available
- **LO-THRO** or **STRAIGHT** profiles to choose from
- **EASY ACCESS M12 PIN & R-clip**



For complete seeding kits, see pages 4 - 7

For spare parts and accessories such as trashguards and liquid kits, see pages 15 - 16

PT5640
Lo-Thro
Standard



PT5650
Lo-Thro
Liquid



PT5660
Straight
Standard



PT5670
Straight
Liquid



For all Seeding Kit part numbers and their prices, use our Seeding Kit Builder at www.agmaster.com.au

All prices exclude any freight costs that may apply

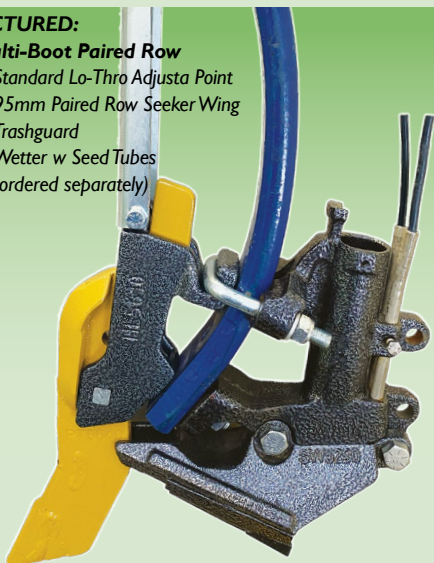
NT19 SEEDING KITS FOR C-SHANK TYNES

The seeding kits pictured on pages 4 & 5 suit a range of Double-Bolt C-Shank tynes. Each series has options available to suit standard 50mm Flat tynes as well as 30mm Edge-On tynes.

PICTURED:

Multi-Boot Paired Row

- Standard Lo-Thro Adjusta Point
- 95mm Paired Row Seeker Wing
- Trashguard
- Wetter w Seed Tubes (ordered separately)



NT19 Paired-Row Multi-Boot Kits

- Height-adjustable point. Standard and Liquid options
- Modular boot. Easily interchange between paired-row and single-row
- Suits both single-shoot & dual-shoot programs; optional dry fertiliser boot available if required
- Good capability for directing liquid behind the point
- Provision for wetter with seed

For more detailed information about the Multi-Boot system see pages 6 - 7

PRICE:

Kit as pictured **\$365** +GST

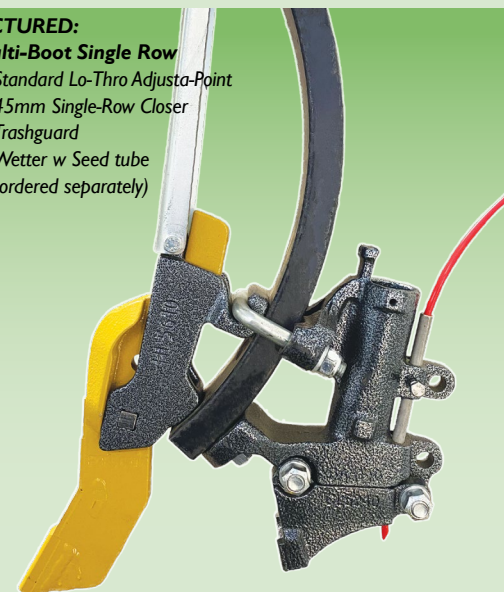
Wetter with seed tube not included in kit, ordered separately

More kit options and prices can be found on page 7

PICTURED:

Multi-Boot Single Row

- Standard Lo-Thro Adjusta-Point
- 45mm Single-Row Closer
- Trashguard
- Wetter w Seed tube (ordered separately)



NT19 Single-Row Multi-Boot Kits

- Height adjustable point. Standard & Liquid options.
- Modular boot. Easily interchange between paired-row and single-row
- Good capability for directing liquid behind the point
- Provision for wetter with the seed

For more detailed information about the Multi-Boot system see pages 6 - 7

PRICE:

Kit as shown **\$260** +GST

Wetter with seed tube not included in kit, ordered separately

More kit options and prices can be found on page 7

For all Seeding Kit part numbers and their prices, use our Seeding Kit Builder at www.agmaster.com.au

All prices exclude any freight costs that may apply

NT19 SEEDING KITS FOR C-SHANK TYNES

The seeding kits pictured on pages 4 & 5 suit a range of Double-Bolt C-Shank tynes. Each series has options available to suit standard 50mm Flat tynes as well as 30mm Edge-On tynes.

PICTURED:

Dual or Single Shoot Flexiboot

- Standard Lo-Thro Adjusta-Point
- 40mm Flexi-Boot
- Trashguard



NT19 Flexi-Boot Kits

Progression of our NT11 Series

- Height-adjustable point. Standard and Liquid options
- The seeding boot is a stiff but flexible hose with 40mm closer plate which self-cleans in heavy soils
- Suits both single-shoot & dual shoot programs
- Allows banding of fertiliser in knife point slot when dual shooting
- 50mm closer available for wider spread in light soils

PRICE:

Standard Kit as pictured **\$325** +GST

PICTURED:

Single Shoot 50mm Rigid Boot

- Standard Lo-Thro Adjusta-Point
- 50mm Single-Shoot Boot
- Trashguard

WETTER WITH
SEED PROVISION
STANDARD ON
CAST BOOTS



NT19 Rigid Boot Kits

Progression of our NT11 Series

- Height-adjustable point. Standard and Liquid options
- Height-adjustable boot
- Multiple boot options to suit both single-shoot & dual shoot programs (see p17)
- Choice of 40mm 50mm closer on single-shoot boot (pictured)
- Improved bolt accessibility on bracket at back of tyne
- Weld-on closer plates available for self-repair

PRICE:

Standard Kit as pictured **\$255** +GST

See page 17 for other boot options and kit price difference.

For all Seeding Kit part numbers and their prices, use our Seeding Kit Builder at **www.agmaster.com.au**

All prices exclude any freight costs that may apply

NT19 MULTI BOOT C-SHANK

**WETTER WITH
SEED NO W
AVAILABLE ON
BOTH PAIRED-ROW
& SINGLE-ROW
SYSTEMS**

The Multi-Boot seeding system is a modular kit for double-bolt c-shank tynes which allows flexibility to choose between multiple paired-row and single-row closing tool options. The key features of this system are:

- Multiple closing tool options with flexibility to easily alternate between paired and single-row depending on conditions and crop type. See below graphic for details.
- Compatible with both NT19 Adjusta-Point and NT11 Point & Holder systems
- Optional dry fertiliser boot is available for dual shoot systems
- There is provision for liquid down the knife point slot and/or wetter with the seed
- A secure bolting arrangement on the closing tool and dry fertiliser boot
- Bracket options to suit 50mm Flat C-Shank tynes and 30mm Edge-On tynes

BUILD YOUR KIT:

1. Select Kit Base
2. Select Point
3. Select Closing Tool
4. Add optional extras

Kit price includes all parts & fasteners required for assembly.

Alternatively, see page 7 for common configurations and their prices

1. Kit Base

\$125 +GST Standard
\$130 +GST Liquid

2. Adjusta-Point Options

Standard 14mm



PT5640
Lo-Thro
\$85 +GST



PT5660
Straight
\$85 +GST

Liquid 14mm



PT5650
Lo-Thro
\$110 +GST



PT5670
Straight
\$110 +GST

3. Closing Tool Options

Paired Row



SW5290
95mm Seeker Wing
(rows 75mm apart)
\$155 +GST



SW5280
85mm Seeker Wing
(rows 65mm apart)
\$145 +GST



SW5270
75mm Seeker Wing
(rows 55mm apart)
\$145 +GST

Single Row



CL5240
45mm Closer
\$50 +GST

4. Optional Extras

LF5520

Stainless Tube for Seed Wetter
One required per seed row
\$5 +GST



FB5310
Dual-Shoot Dry
Fertiliser Boot
\$50 +GST

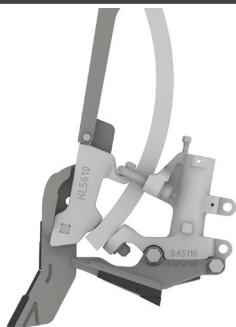
For all Seeding Kit part numbers and their prices, use our Seeding Kit Builder at www.agmaster.com.au

All prices exclude any freight costs that may apply

NT19 MULTI BOOT ASSEMBLIES

The seeding assemblies below include the parts pictured as well as all bolts and fasteners required for assembly. **Please note that X's in part #'s need to be filled with a figure depending on machine type, tyne type & seeker width (if applicable).** For assistance please contact Agmaster, your local dealer or use the Seeding Kit Builder www.agmaster.com.au

Adjusta-Point & Multi-Boot for C-Shank Tynes



PMB6461 1x2x

Standard Adjusta Point with Paired Row Seeker Wing

\$355-\$365 +GST
Depending on wing width



PMB6561 1x2x

Liquid Adjusta Point with Paired Row Seeker Wing

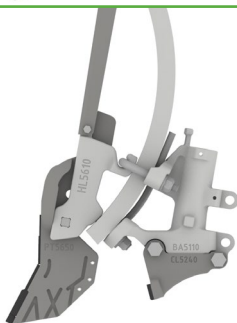
\$385-\$395 +GST
Depending on wing width



PMB6461 1x24

Standard Adjusta Point with Single Row 45mm Closer

\$260 +GST



PMB6561 1x24

Liquid Adjusta Point with Single Row 45mm Closer

\$290 +GST



BMB1x29

MultiBoot only with 95mm Paired Row Seeker Wing

\$230 +GST



BMB1x27

MultiBoot only with 75mm Paired Row Seeker Wing

\$220 +GST



BMB1x24

MultiBoot only with Single Row 45mm Closer

\$125 +GST



FB5310

Dry Fertiliser Boot
\$50 +GST

To add to any paired row kit, add 31 to end of part # and increase kit price

For all Seeding Kit part numbers and their prices, use our Seeding Kit Builder at www.agmaster.com.au

All prices exclude any freight costs that may apply

NT20M MULTIBOOT FOR MORRIS QUANTUM, C2 & C3

This system is a modular seeding kit to suit various Morris parallelogram modules which allows flexibility to choose or alternate between multiple paired-row and single-row boot options. The key features of this system are:

- Multiple closing tool options with flexibility to easily alternate between paired and single-row depending on conditions and application. See below for details.
- Secure bolting arrangement on the closing tool and dry fertiliser boot.
- Height-adjustable point is secured with an easy-access pin and there is no load on the pin when working.
- Optional dry fertiliser boot is available for dual shoot systems
- Liquid point option available and all boot options come liquid ready.

BUILD YOUR KIT:

1. Select Kit Base
2. Select Point
3. Select Closing Tool
4. Add optional extras

Kit price includes all parts & fasteners required for assembly.
Alternatively, see page 9 for common configurations and their prices

1. Kit Base

\$160 +GST Standard
\$165 +GST Liquid

2. Adjusta-Point Options

PT6640
14mm Lo-Thro
Standard Point
\$80 +GST

PT6650
14mm Lo-Thro
Liquid Point
\$105 +GST

3. Closing Tool Options

Paired Row

SW6290
95mm Seeker Wing
(rows 75mm apart)
\$155 +GST

SW6280
85mm Seeker Wing
(rows 65mm apart)
\$145 +GST

SW6270
75mm Seeker Wing
(rows 55mm apart)
\$145 +GST

Single Row

CL6240
45mm Closer
\$50 +GST

Emu Tracker Wheel. Info on P13

FB5310
Dual-Shoot Dry
Fertiliser Boot

4. Optional Extras

FB5310
Optional Dry
Fertiliser Boot
\$50 +GST

LF5520
Stainless Tube
for Seed Wetter
One required per
seed row
\$5 +GST

**WETTER WITH
SEED NOW
AVAILABLE ON
BOTH PAIRED-ROW
& SINGLE-ROW
SYSTEMS**

For all Seeding Kit part numbers and their prices, use our Seeding Kit Builder at www.agmaster.com.au

All prices exclude any freight costs that may apply

NT20M MultiBoot for Morris Quantum C2 & C3 Assemblies



PMM6418202X31

14mm Adjusta Point
with Paired Row Seeker
Wing and Dual Shoot
Dry Fertiliser Boot

\$435-\$445 +GST

Depending on wing width

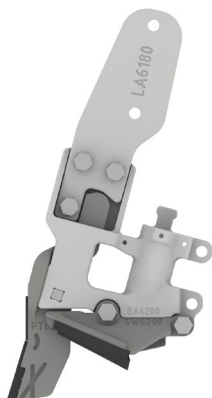


PMM6518202X31

14mm Liquid Adjusta
Point with Paired Row
Seeker Wing, Dual
Shoot Dry
Fertiliser Boot and
Stainless Liquid Casing

\$465-\$475 +GST

Depending on wing width

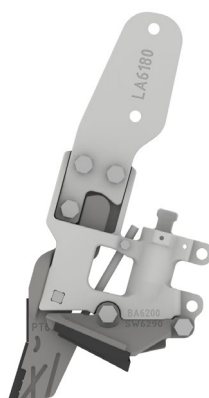


PMM6418202X

14mm Adjusta Point
with 75mm Paired Row
Seeker Wing

\$385-\$395 +GST

Depending on wing width

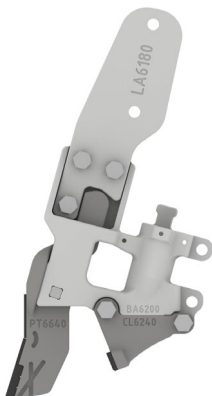


PMM6518202X

14mm Liquid Adjusta
Point with Paired Row
Seeker Wing and
Stainless Liquid Casing

\$415-\$425 +GST

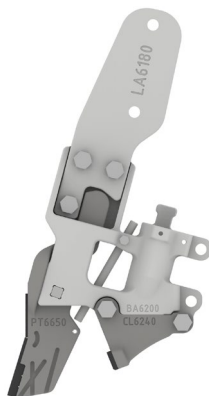
Depending on wing width



PMM64182024

14mm Standard Point
with 45mm Single Row
Closer

\$290 +GST



PMM65182024

14mm Liquid Point
with 45mm Single Row
Closer and Stainless
Liquid Casing

\$320 +GST

For all Seeding Kit part numbers and their prices, use our Seeding Kit Builder at www.agmaster.com.au

All prices exclude any freight costs that may apply

NT20B MULTIBOOT FOR BOURGAULT PARALINK

This system is a modular seeding kit to suit the Bourgault Paralink module which allows flexibility to choose or alternate between multiple paired-row and single-row boot options. The key features of this system are:

- Multiple closing tool options with flexibility to easily alternate between paired and single-row depending on conditions and application. See below for details.
- Secure bolting arrangement on the closing tool and dry fertiliser boot.
- Height-adjustable point is secured with an easy-access pin and there is no load on the pin when working.
- Optional dry fertiliser boot is available for dual shoot systems
- Liquid point option available and all boot options come liquid ready.

BUILD YOUR KIT:

1. Select Kit Base

2. Select Point

3. Select Closing Tool

4. Add optional extras

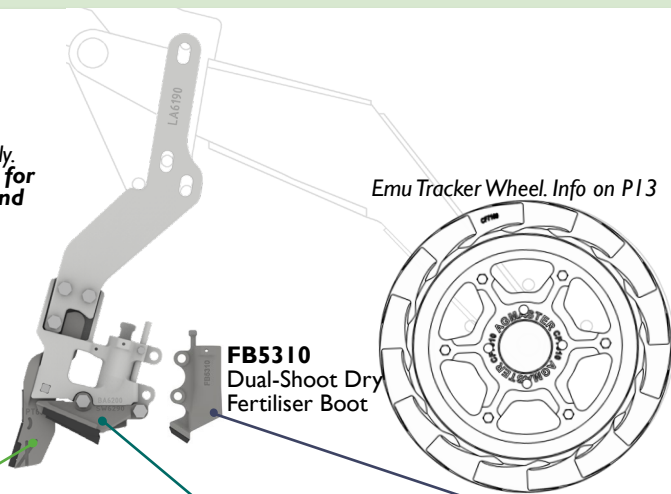
Kit price includes all parts & fasteners required for assembly.

Alternatively, see page 11 for common configurations and their prices

1. Kit Base

\$190 +GST Standard

\$195 +GST Liquid



2. Adjusta-Point Options



PT6640
14mm Lo-Thro
Standard Point
\$80 +GST



PT6650
14mm Lo-Thro
Liquid Point
\$105 +GST

3. Closing Tool Options

Paired Row



SW6290
95mm Seeker Wing
(rows 75mm apart)
\$155 +GST



SW6280
85mm Seeker Wing
(rows 65mm apart)
\$145 +GST



SW6270
75mm Seeker Wing
(rows 55mm apart)
\$145 +GST

Single Row



CL6240
45mm Closer
\$50 +GST

4. Optional Extras



FB5310
Optional Dry
Fertiliser Boot
\$50 +GST



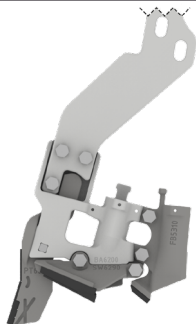
LF5520
Stainless Tube
for Seed Wetter
One required per
seed row
\$5 +GST

**WETTER WITH
SEED NO W
AVAILABLE ON
BOTH PAIRED-ROW
& SINGLE-ROW
SYSTEMS**

For all Seeding Kit part numbers and their prices, use our Seeding Kit Builder at www.agmaster.com.au

All prices exclude any freight costs that may apply

NT20B MultiBoot for Bourgault Paralink Seeding Assemblies

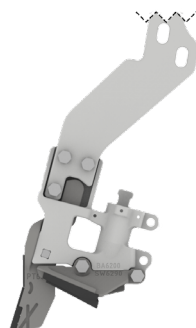


PMM6419202X3I

14mm Adjusta Point
with Paired Row
Seeker Wing and Dual
Shoot Dry Fertiliser
Boot

\$465-\$475 +GST

Depending on wing width

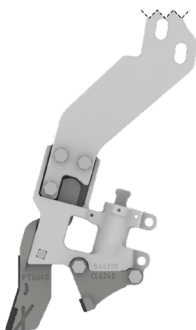


PMM6419202X

14mm Adjusta Point
with Paired Row
Seeker Wing

\$415-\$425 +GST

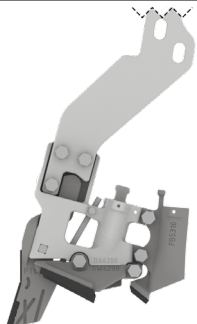
Depending on wing width



PMM64192024

14mm Standard Point
with 45mm Single Row
Closer

\$320 +GST



PMM6519202X3I

14mm Liquid
Adjusta Point with
Paired Row Seeker
Wing, Dual Shoot Dry
Fertiliser Boot and
Stainless Liquid Casing

\$495-\$505 +GST

Depending on wing width

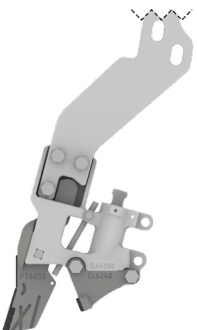


PMM6519202X

14mm Liquid
Adjusta Point with
Paired Row Seeker
Wing and Stainless
Liquid Casing

\$445-\$455 +GST

Depending on wing width



PMM65192024

14mm Liquid Point
with 45mm Single Row
Closer and Stainless
Liquid Casing

\$350 +GST

NT21B Bourgault PLDS Replacement Points

NEW

We now have the
following non-genuine
replacement parts
available to suit the
Bourgault PLDS shank.

Pre-order recommended



PT6710

Fert Knife for PLDS

\$130 +GST



PT6720

Seed Knife for PLDS

\$90 +GST

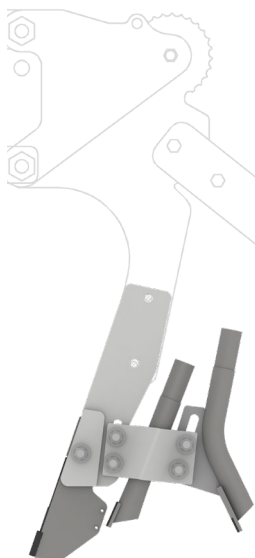
For all Seeding Kit part numbers and their prices, use our Seeding Kit Builder at www.agmaster.com.au

All prices exclude any freight costs that may apply

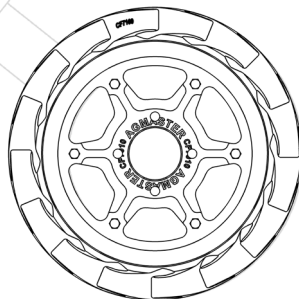
NT21M DUAL IN-LINE FOR MORRIS QUANTUM/C2/C3

Our Dual In-Line system for the Morris Quantum & Contour 2 was developed in response to demand for dual-shoot single row in-line systems for these machines. Seeding Kits include 12mm height-adjustable point (liquid option available), seed & fertiliser boots and all bolts and fasteners.

NT21M Dual In-Line Seeding Kits



Emu Tracker Wheel. Info on P13



Complete Kit Prices

Kits include point, leg, seed boot, fertiliser boot & all bolts and fasteners required

PMI063554

Standard Point Kit

\$365 +GST

PMI073554 (pictured)

Liquid Point Kit

\$390 +GST

Replacement Points

PT5060

12mm Standard Adjustable Point

\$75 +GST



PT5070

12mm Liquid Adjustable Point

\$100 +GST



For all Seeding Kit part numbers and their prices, use our Seeding Kit Builder at www.agmaster.com.au

All prices exclude any freight costs that may apply

EMU TRACKER WHEELS

Agmaster Emu Tracker wheels have a unique design which addresses the issue of presswheel furrow smearing on parallelogram seeding modules such as the following (other makes may also be adaptable):

- Morris Quantum
- Morris Contour 2
- Bourgault Paralink
- Horsch Sprinter
- Flexicoil PD5700

The Emu Tracker replaces the existing wheel on the module. The flexible feet flick some of the loose soil back into the seeding row while giving some pressing effect. They are most effective in moist soil conditions.

PRICE: Wheel as pictured **\$250** +GST



Emu Tracker Finish Comparison



Original Module Wheel Finish



Emu Tracker Wheel Finish



Pictured is a Morris Contour 2 with Agmaster Seeding Kits (P8 - P9) & Emu Tracker Wheels. Photo courtesy of Wiesners Machinery Dealership in Walla Walla, NSW

For all Seeding Kit part numbers and their prices, use our Seeding Kit Builder at www.agmaster.com.au
All prices exclude any freight costs that may apply

OTHER NO-TILL SEEDING KITS

NT21D Adjusta-Point & Holder for DBS

NEW!

The **NT21D Adjusta-Point** is our first **Point & Holder** system to suit **DBS/Groundhog** shanks. These units have been trialled in **WA** over the **2021 & 2022** seasons. The key features are:

- **HEIGHT ADJUSTABLE** with five settings (120 - 200mm) to allow for lowering of point as it wears or for more below the seed cultivation if desired.
- Unique **POINT HOLDER** design with built-in **TRASHGUARD**
- **EASY ACCESS** M12 PIN & R-clip

PRICES:

Point & Holder Kit as pictured
PTH7610 **\$125** +GST

Replacement Parts

PT7760 Point **\$95** +GST

HL7710 Holder **\$30** +GST



LIMITED STOCK AVAILABLE FOR 2023

NT08 Series Bolt-On Kits



For single bolt cultivator and scarifier tynes in the 90 - 150kg breakout range. Standard single system included a 12mm point and depth adjustable 40mm boot assembly. See page 17 for other boot options and kit price difference.

NT08 Seeding Kits suit the following tynes:

Shearer 580 & 620, Forward/Chamberlain 270, 700 & 800 series, Alfarm, John Deere/International Scari & Shearer Scari

PRICES:

Standard Single Shoot Kit as shown **\$185** +GST

Replacement Points **\$70** +GST

For all Seeding Kit part numbers and their prices, use our Seeding Kit Builder at www.agmaster.com.au

All prices exclude any freight costs that may apply

NT19 & NT11 ACCESSORIES

Trashguards & Sweep Adaptors

TRASHGUARDS

These saddle the point holder and secure to the holder or tyne to provide better trashflow in heavy residue. There are two styles for NT11 and NT19 Adjusta-Point and suit both flat and edge-on tynes. *Below prices include required fasteners*



NT19 Trashguard
for Adjusta-Point
\$25 +GST



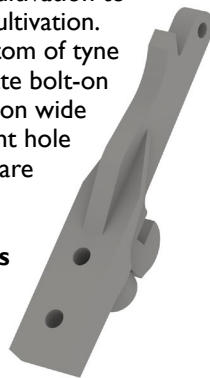
NT11
Trashguard
\$35 +GST

SWEEP ADAPTORS

These secure into the holder in place of the point for quick change from No-Till cultivation to conventional cultivation. Replicates bottom of tyne to accommodate bolt-on wedge or bolt-on wide point. 3 different hole configurations are available.

Available for NT11 holders only.

\$30 +GST



Liquid Kits



These kits piggy back Agmaster NT19 & NT11 rigid boot kits. They will direct liquid fertiliser from an existing liquid distribution system to the base of the tynes and into the back of a liquid fertiliser point (see pages 5 & 16). The liquid kit includes a shaped stainless tube that acts as a casing for 3 - 6mm OD flexible fertiliser delivery hose.

Kit does not include liquid point or flexible tube. A longer bolt may also be required to bolt clamp plate to tyne. Kits are available for 2 pipe sizes.

Single Liquid Kit: \$26 +GST

Double Liquid Kit: \$42 +GST

For all Seeding Kit part numbers and their prices, use our Seeding Kit Builder at www.agmaster.com.au

All prices exclude any freight costs that may apply

REPLACEMENT POINTS

NT19 Series Adjusta-Points & Holder



PT5640
Lo-Thro
Standard 14mm
\$85 +GST



PT5660
Straight
Standard 14mm
\$85 +GST



HL5610
Adjusta-Point
Holder 2021
\$25 +GST



PT5650
Lo-Thro
Liquid 14mm
\$110 +GST



PT5670
Straight
Liquid 14mm
\$110 +GST

NT11 Series Slip-On Point Options



PT1120
12mm Straight
Standard
\$65 +GST



PT1150
12mm Straight
Liquid
\$90 +GST



PT1140
14mm Lo-Thro
Standard
\$75 +GST



PT1170
14mm Lo-Thro
Liquid
\$100 +GST



PT1160
16mm Straight
Standard
\$75 +GST



PT1190
16mm Straight
Liquid
\$100 +GST



PT1130
16mm Winged
\$110 +GST

*For less common replacement points, boots and other parts,
please visit our website **www.agmaster.com.au***

For Presswheel Module & Fixed Extension calculator, use our Presswheel Builder at **www.agmaster.com.au**
All prices exclude any freight costs that may apply

OTHER NO-TILL SEEDING KITS AND PARTS

NT08/NT11/NT19 Series Boots Options (excludes Flexiboos)



BT2540/BT2550
Single Shoot Boot with
40mm or 50mm Closer
Plate

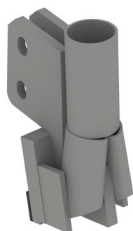
\$60 +GST

Standard NT19 Kit
Standard Adjusta-Point
with choice of BT2540
or BT2550 boots

\$255 +GST
Picture and details P5

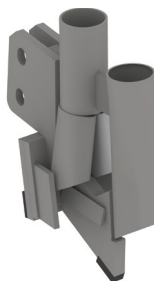
Standard NT08 Kit
12mm bolt-on point
with choice of BT2540
or BT2550 boots

\$185 +GST
Picture and details P14



BT2370
Single Shoot Split Boot with
65mm Closer Plate
\$115 +GST

*For this boot option in a kit add
\$55 +GST to standard single
system kit price above*



BT2390
Double Shoot Split Boot with
65mm Closer Plate
\$160 +GST

*For this boot option in a kit add
\$100 +GST to standard single
system kit price above*

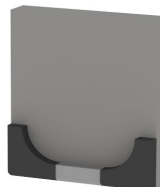
NT08/NT11/NT19 Series Closer Plates (excludes Flexiboos)



CL2494
40mm Weld-On
Closer Plate
\$25 +GST



CL2495
50mm Weld-On
Closer Plate
\$25 +GST



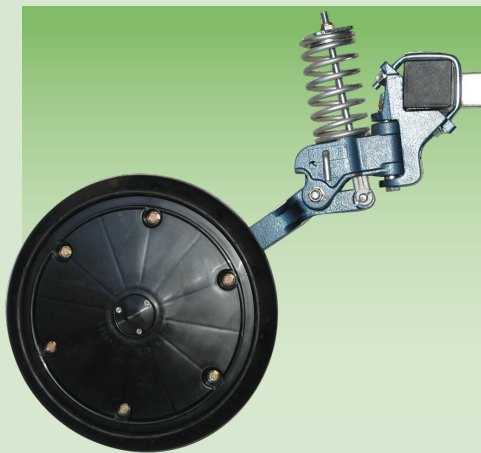
CL2496
65mm Weld-On
Closer Plate
\$28 +GST

**For our full range of parts, visit our website
to view our Parts Book or spare parts section**

www.agmaster.com.au



PRESSWHEELS



70mm "V" Presswheel Module.
See page 19 for all tyre profile options

- Individually mounted for independent pressure
- Self tracking
- Semi pneumatic tyres for soil shedding
- Down pressure adjustable
- Can be lifted and locked when not required
- Light weight but robust - module weight 11kg

See page 21 for Presswheel mounting options

Agmaster Presswheels offer flexibility to suit all seeding conditions. The presswheels mount to a false bar behind the last rank of seeding tynes.

Presswheel module as shown:

\$430 +GST

with 50mm Flat, 70mm V or 95mm V tyre profiles

\$450 +GST

100mm WV tyre profiles

Optional inner spring for extra pressure

\$15 +GST

Optional offset wheel spacer for clay shedding

\$20 +GST



For Presswheel Module & Fixed Extension calculator, use our Presswheel Builder at www.agmaster.com.au

All prices exclude any freight costs that may apply

PRESSWHEEL TYRE OPTIONS

Tyre Profile Options



50mm Flat Tyre
Crumbles sides of narrow slot
PWF50 \$430 +GST



70mm 'V' Tyre
General purpose in mixed soil types
PWV70 \$430 +GST



95mm 'V' Tyre
Wide press on light sand soils
PWV95 \$430 +GST



100mm 'W' Tyre
For use with paired row seeker boots
PWW100 \$450 +GST

Suitable tyre profile will depend on seeding boot style, soil conditions and desired finish.

Seek local experience or contact an Agmaster Sales Consultant for more information. All prices shown are for complete module (pictured on page 18) with selected tyre profile option.

For Presswheel Module & Fixed Extension calculator, use our Presswheel Builder at www.agmaster.com.au
All prices exclude any freight costs that may apply

EMU TRACKER PRESSWHEELS

NEW!


By increasing demand, the Agmaster Emu Tracker wheel is now available as an individually mounted Presswheel Module. These have been run in WA & NSW over the 2021 and 2022 seasons with positive customer feedback including comments of:

- Reduction in chemical damage on edge of furrow
- Fewer weed escapes at edge of rows
- Less smearing in wet conditions
- Improved seed coverage
- Reduced mud build up on tyre in sticky soils

PRICES:

Presswheel module as pictured with
130mm wide Emu Tracker tyre

PWE130

\$485 +GST

As with our usual presswheel range, these units mount to a false bar behind the last rank of seeding tyres. Additional features include:

- Individually mounted for independent pressure
- Greasable hubs
- Self tracking
- Down-pressure adjustable
- Extra inner-spring option for additional pressure
- Can be lifted and locked when not required
- Robust aluminium rims - module weight 18kg

See page 21 for Presswheel mounting options



LIMITED STOCK AVAILABLE FOR 2023

For Presswheel Module & Fixed Extension calculator, use our Presswheel Builder at www.agmaster.com.au

All prices exclude any freight costs that may apply

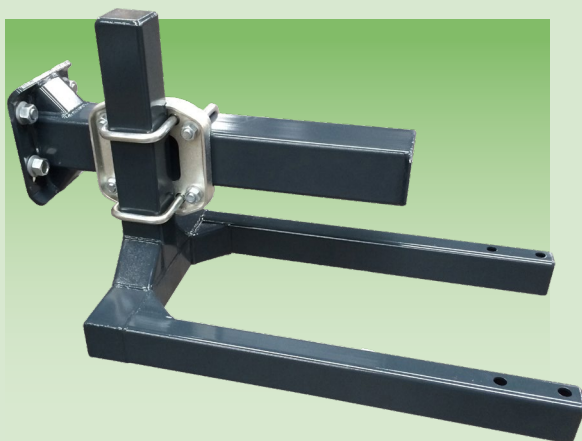
PRESSWHEEL MOUNTING OPTIONS



FIXED EXTENSION ARM

Used when presswheels are permanent with provision for an adaptor plate to be welded to end of main arm to add harrows in combination. If no harrows are used, 2 arms are required per section. A 3rd arm is recommended for any section with more than 18x Standard Presswheels or 12x Emu Tracker Presswheels. Typical single fold machine will require 6 or 7 arms. Mount bar secures to end of these arms. Weight 31kg

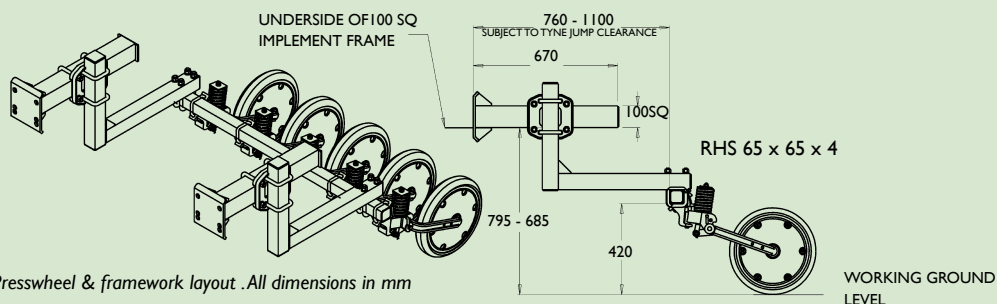
\$600 +GST



FIXED EXTENSION ARM WITH DOUBLE DROPPER

Used in conjunction with above arms of short sections of folding machines i.e. 7ft or less with up to 10x Standard Presswheels or 7x Emu Tracker Presswheels. Typically used on short outer wings of double fold machines. Mount bar secures to end of arm. Weight 38kg

\$750 +GST



Presswheel & framework layout .All dimensions in mm

For Presswheel Module & Fixed Extension calculator, use our Presswheel Builder at www.agmaster.com.au

All prices exclude any freight costs that may apply

NO-TILL HARROWS



Agmaster No-Till Harrows have been developed to compliment no-till seeding systems. Their non-aggressive rotary action is designed to brush loose soil from the interrow back into the seed row. They have excellent trash flow capabilities and can be used independently or in combination with presswheels.

- Easy to set up and use
- Working angle and pressure adjustable
- Lifts and folds with machine
- Excellent stubble handling

STAR HARROWS are suitable for covering behind narrow points to provide an even cover. Long life tips are replaceable. 4ft and 5ft gangs will provide the best finish. 6ft gangs are available if other sizes not suitable.

PRICES:

4ft gang with telecarrier arm **\$2500** +GST
 5ft gang with telecarrier arm **\$2700** +GST
 6ft gang with telecarrier arm **\$2900** +GST
 Replacement Single Star Tips **\$5.50**EA +GST
 Replacement Star Tips x100 **\$500** +GST



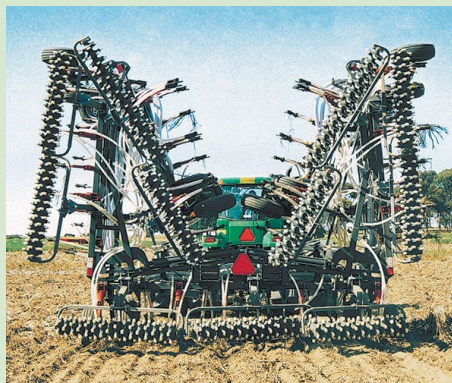
COIL HARROWS are suitable for covering behind a greater variety of points. Slightly more aggressive, they are more effective in sticky soil conditions.

PRICES:

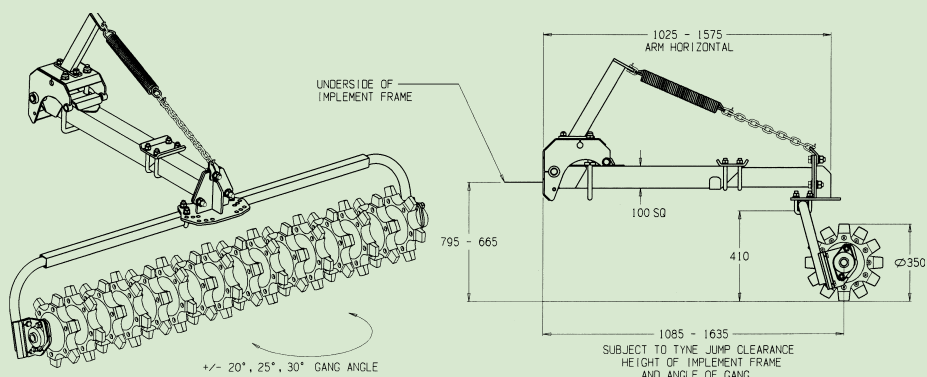
4ft gang with telecarrier arm **\$2350**+GST
 5ft gang with telecarrier arm **\$2550**+GST



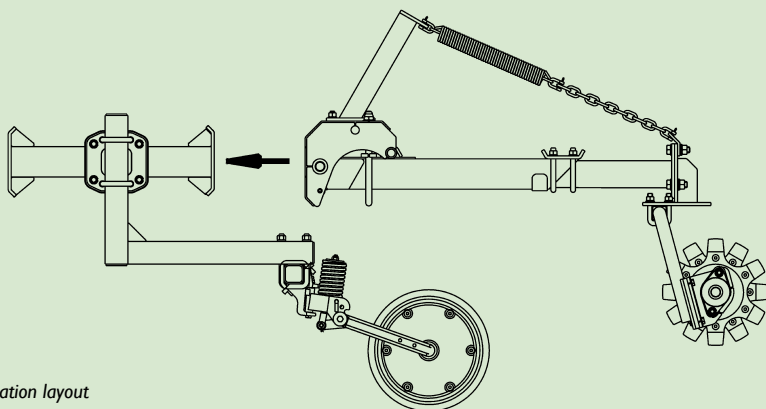
Presswheels and harrows combination



Double fold machine with star harrows



Harrow & telescopic arm layout. All dimensions in mm



Combination layout



Paired Row Seeker Boot establishment



Western Australia Head Office:

10 Fargo Way
WELSHPOOL
Western Australia 6106

Phone: 08 9358 1555

Fax: 08 9358 1888

Email: sales@agmaster.com.au

www.agmaster.com.au

South Australia

Renee Attwood
08 9358 1555

renee@agmaster.com.au

Victoria & Tasmania

Dan Bolwell
0417 565 091

dan@agmaster.com.au

New South Wales & Queensland

Rowan Cox
0488 995 566

rowan@agmaster.com.au

Your local dealer is:

Disclaimer: Agmaster strongly recommends that you consult your agronomist to determine the suitability of Agmaster products in your seeding program. Agmaster gives absolutely no guarantee as to the suitability or performance of its products. Furthermore, Agmaster will not accept liability for any loss or damage caused by, or as a consequence of, the use of its products. Agmaster's products and prices are subject to change without notice. E & OE.