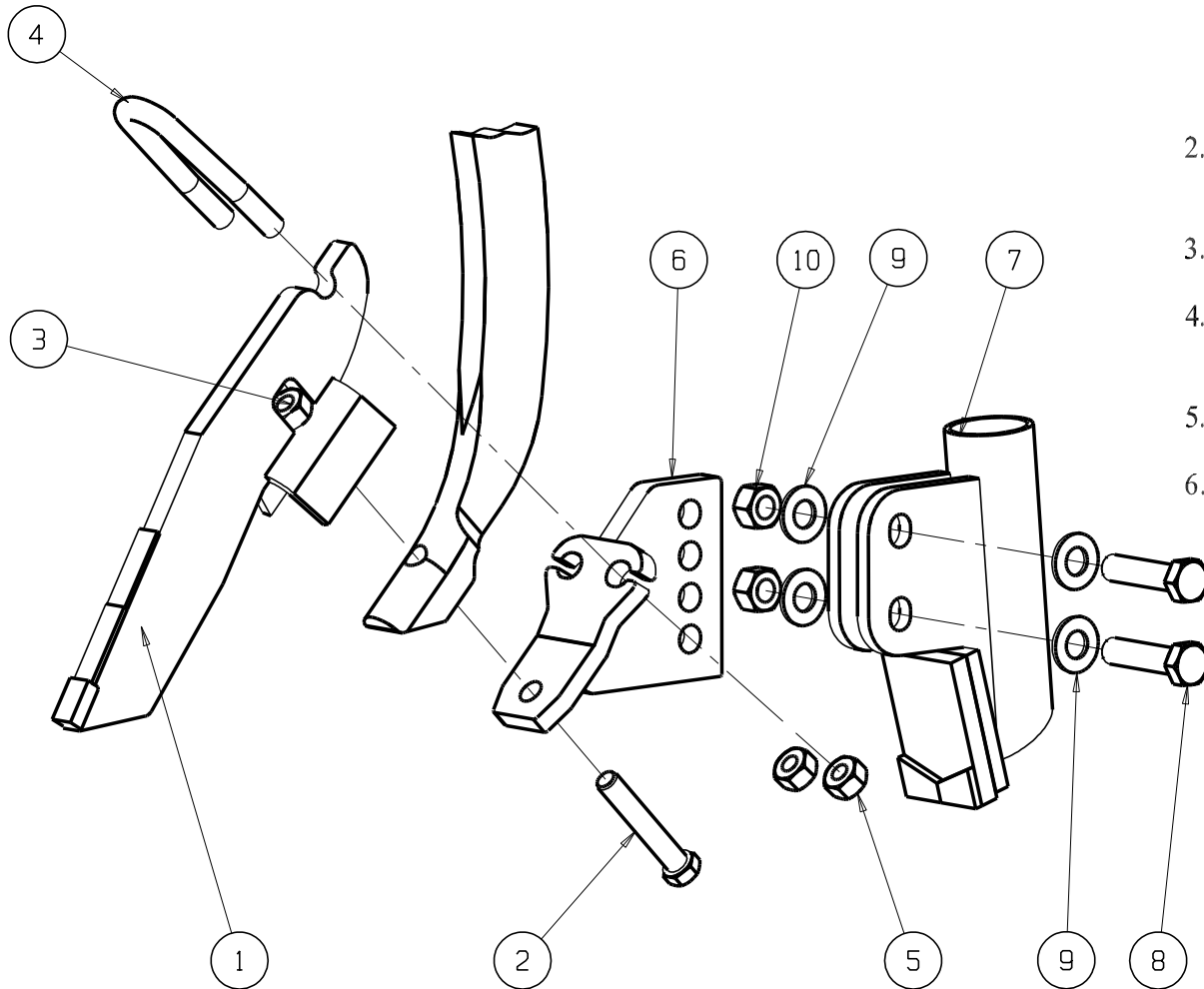


RETENSION ALL BOLTS AFTER 8 hrs WORKING



1. Make delivery hose adaption to boot (7).
Some common methods are (depending on delivery hose size).
 - * Fix a short piece of 1 1/4" or 32 mm poly pipe with a maximum 38 mm OD into boot. Most hoses will plug inside or over outside of this pipe.
 - * Fix delivery hose directly into boot.
 - * Weld suitable size pipe sleeve onto boot (7) to accept delivery hose.
2. Bolt boot (7) to bracket (6) using items 8, 9 & 10, after determining a suitable height.
3. Loosely bolt point (1) and bracket (6) to tyne using items 2, & 3.
4. Loosley fit U bolt (4) around top of point and secure thru bracket (6) with nuts (5).
5. Tighten bolt (2).
6. Nip up bolt (4) - DO NOT OVER TIGHTEN

10	2	NU12CL	NUT 1/2" UNF
9	4	WA12F	HARDENED WASHER 1/2"
8	2	BD122	BOLT 1/2" UNF X 2'
7	1		BOOT - TO SUIT APPLICATION
6	1		BRACKET - TO SUIT TYNE
5	2	NU12MNY	NUT M12
4	1	UB2003	U BOLT FOR SCARIFIERS
4	1	UB2004	U BOLT FOR SEEDERS
3	1	NU12CL	NUT 1/2" UNF FOR SCARIFIERS
3	1	NU716CL	NUT 7/16" UNF FOR SEEDERS
2	1	BD12214	BOLT 1/2" UNF X 2 1/4" FOR SCARIFIERS
2	1	BD716212	BOLT 7/16" UNF X 2 1/2" FOR SEEDERS
1	1		POINT - TO SUIT TYNE
REF	QTY	PART No	DRG SIZE DESCRIPTION

ALL RIGHTS STRICTLY RESERVED
REPRODUCTION OR ISSUE TO THIRD
PARTIES IN ANY FORM WHATSOEVER
IS NOT PERMITTED WITHOUT WRITTEN
AUTHORITY FROM AGMASTER.

AGMASTER
2067 MARSHALL ST. COLLIE WA 6225

ASSY INSTRUCTIONS
NT08 POINTS & BOOTS

AI1010