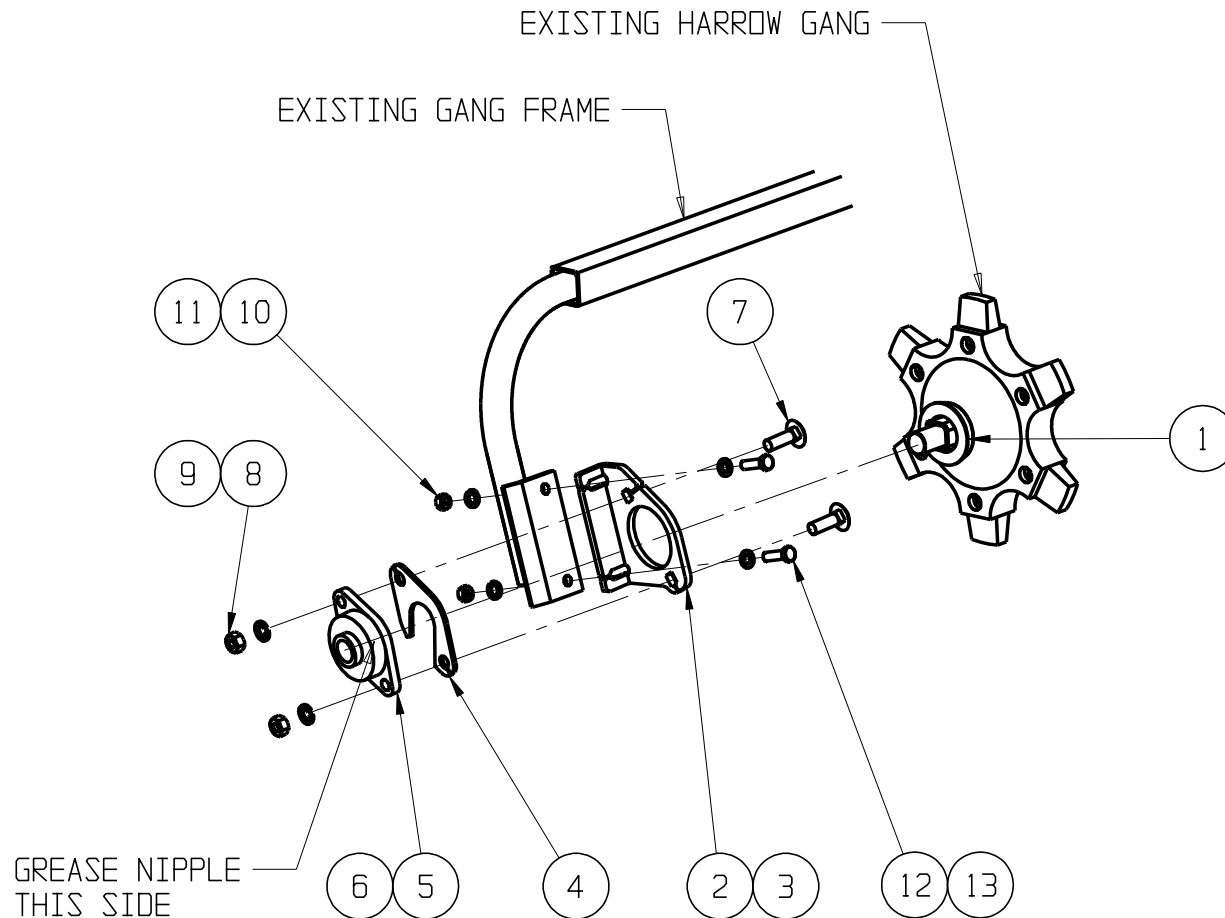


RETENSION ALL BOLTS AFTER 8 hrs WORKING

NOTE ITEMS 2 TO 9 INCL. ARE SUPPLIED AS TWO ASSMEBLIES

1. Remove existing bearings, washers, spacers and hardware.
2. Ensure stars are central on axle, knock them along if necessary.
3. Slide crown slinger (1) onto each end as shown.
4. Fit bearing assemblies to each end ensuring bearing sits against slinger.
5. Bolt one end of gang assembly to gang frame ensuring slot in item 4 faces down and bearing is to rear of gang frame.
6. Bolt other end together, if holes do not line up stretch the gang frame to allow bolts to fit.



GREASE NIPPLE  
THIS SIDE

\* Grease bearings weekly. Do not over grease as seals may be damaged

13	4	WA12MF		M12 FLAT WASHER
12	4	BD12M40		M12 X 40 BOLT
11	4	WA12MS		M12 SPRING WASHER
10	4	NU12MZP		M12 NUT
9	4	WA16MS		M16 SPRING WASHER
8	4	NU16MZP		M16 NUT
7	4	BD16M50CLUP		M16 X 50 CLIP HEAD SQUARE NECK BOLT
6	2	BE114UCR3		BEARING - UC207-20R3
5	2	BE114FL		FLANGED HOUSING
4	2	HA3372		SPACER PLATE
3	1	HA3381		BRACKET LEFT HAND
2	1	HA3371		BRACKET RIGHT HAND
1	2	HA3400		CROWN SLINGER
REF	QTY	PART No	DRG SIZE	DESCRIPTION

ALL RIGHTS STRICTLY RESERVED  
REPRODUCTION OR ISSUE TO THIRD  
PARTIES IN ANY FORM WHATSOEVER  
IS NOT PERMITTED WITHOUT WRITTEN  
AUTHORITY FROM AGMASTER.

**AGMASTER**  
2067 MARSHALL ST. COLLIE WA 6225

ASSY INSTRUCTIONS  
HARROW BRG UPGRADE

AI1051