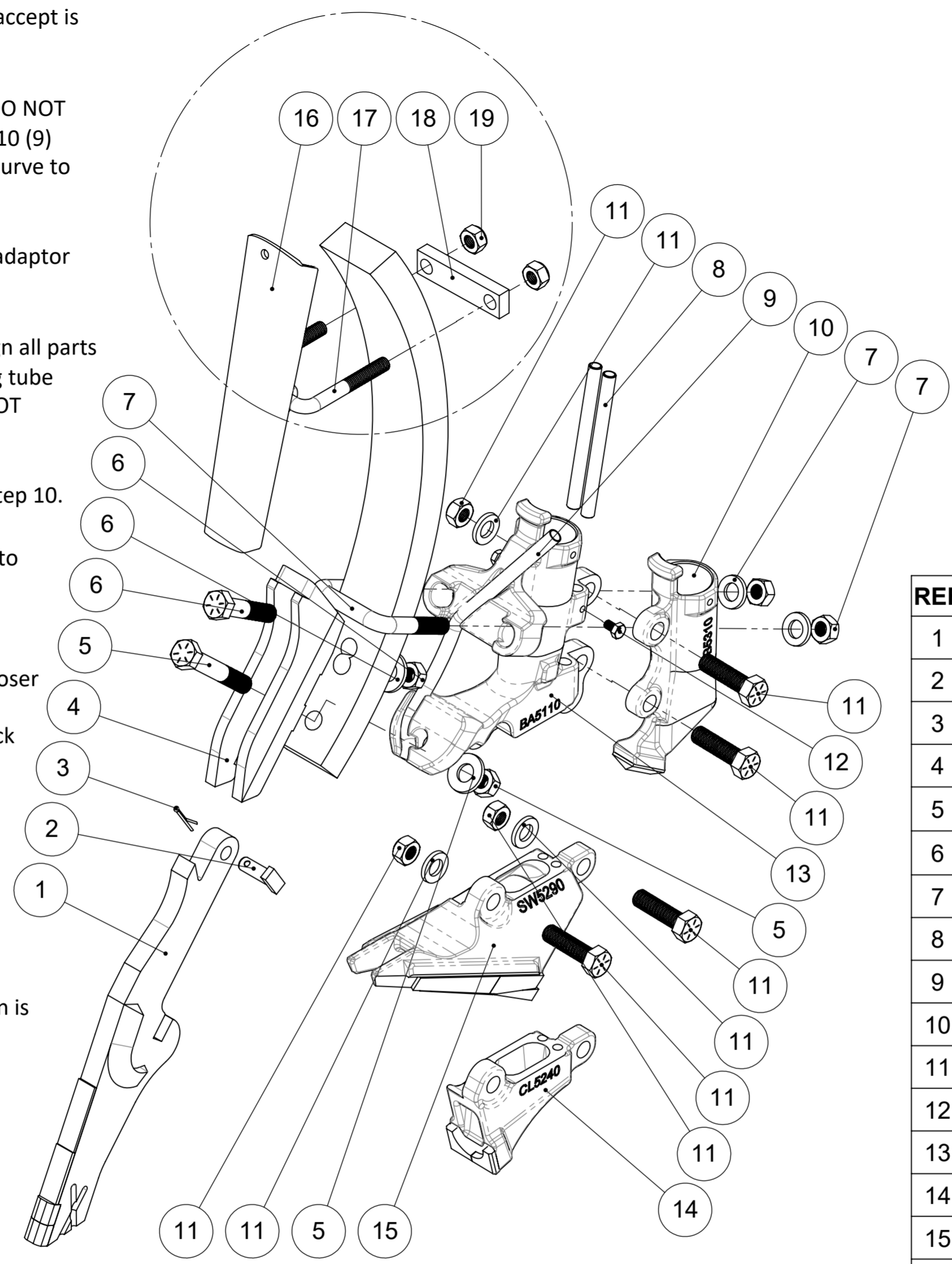


1. Ensure delivery hose fits into boot. Maximum hose size boot will accept is 38mm O.D. Adaption will be necessary if hose O.D. is bigger.
2. Bolt point holder (4) to tyne using upper tyne bolt assembly (6). DO NOT TIGHTEN. If using liquid fertiliser to back of point, lay casing LF5410 (9) into grooves at front of boot adaptor BA5110 (13) This tube will curve to the bracket shape when tightened later.
3. Use lower tine bolt assembly (5) to secure point holder and tyne adaptor to tine. DO NOT TIGHTEN.
4. Fit U bolt assembly (7) to secure top of tyne adaptor to tyne. Align all parts to tyne and tighten all bolts. If using liquid with seed, slide casing tube SL5510 (8) into boot adaptor (13). Fit loosely with bolt but DO NOT TIGHTEN until after Step 6.
5. Secure point (1) into holder with pin (2), Leave split pin (3) until Step 10.
6. Feed any flexible liquid with the seed tubes through casing tubes to protrude approximately 25mm.
7. Fit seeker wings/closer (14,15) to boot adaptor (13) feeding any flexible liquid tubes through outlets to seed zone. Secure wing/closer (14,15) to boot adaptor (13) using bolt assembly (11). Feed any flex liquid fertiliser tubes through casing (9) into the back of point to desired depth.
8. If using optional dry fertiliser boot FB5310 (10), secure to boot adaptor (13) with bolt assembly (11).
9. Delivery hose into boot can be secured with a hose clamp (not supplied) or tek screw/bolt (not supplied).
10. Secure point T-pin (2) with Split pin (3). Ensure one leg of split pin is sufficiently bent to secure.
11. Tighten all remaining bolts.
12. If fitting optional trashguards; fit U bolt (17) through guard (16), fit guard (16) to tyne making sure the lower edge is correctly located in the lugs of holder (4). Fit lug (18) over U bolt (17). DO NOT OVER TIGHTEN



REVISIONS			
REV.	DESCRIPTION	DATE	APPROVED
1	INITIAL RELEASED - GB	27-09-17	

REF	QTY	PART No.	DESCRIPTION
1	1	PT11XX	POINT ( PT1160 AS SHOWN )
2	1	TP1180	"T" PIN
3	1	PI425S	SPLIT PIN
4	1	HL1100	HOLDER
5	1	BNW122XX	BOLT 1/2" x 2 3/4" OR 3", WASHER, CONELOCK NUT
6	1	BNW122XX	BOLT 1/2" x 2" OR 2 1/4", WASHER, CONELOCK NUT
7	1	UBN2001	U BOLT M12 65x52, WASHER, NYLOCK NUT
8	2	SL5510	LIQUID WITH SEE CASING TUBE
9	1	LF5410	LIQUID FERTILSER TUBE CASING TUBE
10	1	FB5310	DRY FERTILISER BOOT
11	4	BNW12134	BOLT 1/2" x 1 3/4", WASHER, CONELOCK NUT
12	2	BO6M10	BOLT 6mm x 10mm
13	1	BA5110	BOOT ADAPTOR
14	1	CL5240	CLOSER 45mm
15	1	SW5270	SEEKER WING 75mm
	1	SW5290	SEEKER WING 95mm ( AS SHOWN )
OPTIONAL TRASH GUARD			
16	1	TG1170	TRASH GUARD
17	1	UB1003	U BOLT FOR 50 WIDE TINE
18	1	TG1175	LUG - FOR 50 WIDE TINE
19	2	NU10MNY	NYLOCK NUT M10

**PROPRIETARY AND CONFIDENTIAL**  
 ALL RIGHTS STRICTLY RESERVED REPRODUCTION OR ISSUE TO THIRD PARTIES IN ANY FROM WHATEVER IS NOT PERMITTED WITHOUT WRITTEN AUTHORITY FROM **AGMASTER**.

DWG No:  
**AI2020**

ASSY INSTRUCTIONS  
 MULTI BOOT C SHANK

10 Fargo Way,  
 Welshpool WA 6106  
 T: 0893581555  
 F: 0893581888  
[www.agmaster.com.au](http://www.agmaster.com.au)