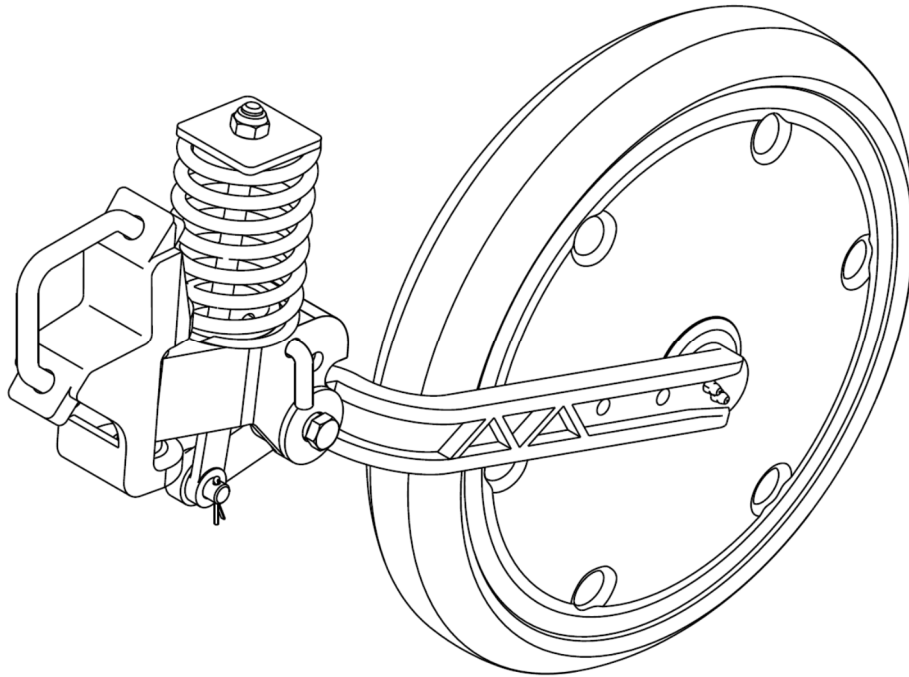


## **PRESSWHEEL MODULES**

Presswheel modules are supplied individually and include “V” bolt to secure to mounting bar.



| Part No |                                     | <u>Prices</u> |          |
|---------|-------------------------------------|---------------|----------|
|         |                                     | Exc           | Inc      |
| PWF50   | Presswheel Flat 50mm Assembly       | \$370.00      | \$407.00 |
| PWV70   | Presswheel “V” 70mm Assembly        | \$370.00      | \$407.00 |
| PWV95   | Presswheel “V” 95mm Assembly        | \$370.00      | \$407.00 |
| PWW20   | Presswheel Wedge 20mm Assembly      | \$390.00      | \$429.00 |
| PWW100  | Presswheel ‘W’ Shape 100mm Assembly | \$390.00      | \$429.00 |

*See next page for tyre profiles*

|        |  |          |          |
|--------|--|----------|----------|
| SP4012 | Optional Inner Spring 145 x 60 for extra down pressure | \$ 15.00 | \$ 16.50 |
|--------|--|----------|----------|

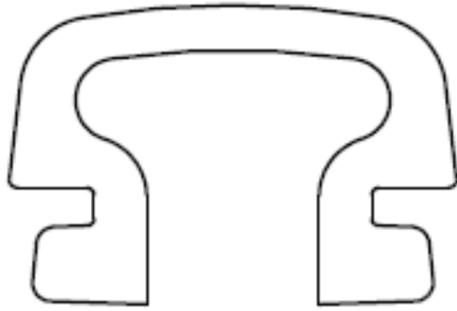
**Presswheel Spacer** For extra clearance between arm and wheel to assist in mud shedding

|  |   |          |          |
|--|---|----------|----------|
| PW4440   | Optional wheel to arm spacer                  | \$ 15.00 | \$ 16.50 |
| BO16M120   | Corresponding bolt M16 x 120 for above spacer | \$ 4.00  | \$ 4.40  |
| For Presswheel modules ordered with spacer factory fitted add ‘S’ to above assembly part no’s. |   | \$ 15.00 | \$ 16.50 |
| E.g. 70mm V tyre profile with spacer would be PWV70S   |   | \$385.00 | \$423.50 |

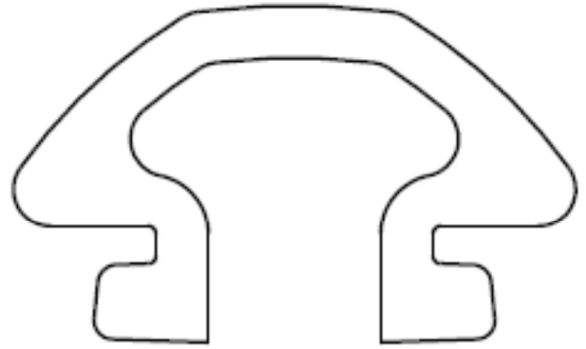
Replacement Parts for Presswheels are on **pages 50 - 53**

*Not sure what kit part number you need? Or what options are available for a particular machine? Use one of our online building tools for Seeding Kits and Presswheels which will work it all out for you! [www.agmaster.com.au](http://www.agmaster.com.au)*

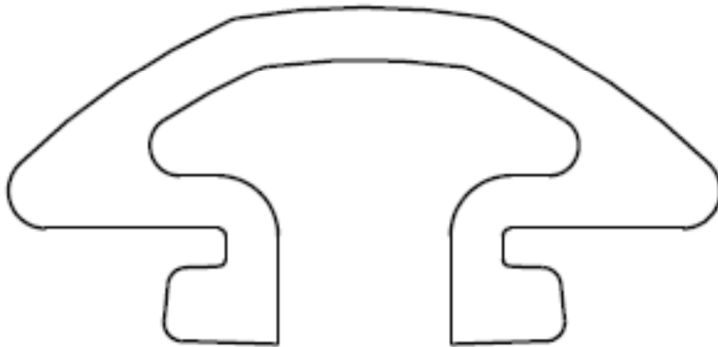
## TYRE PROFILES



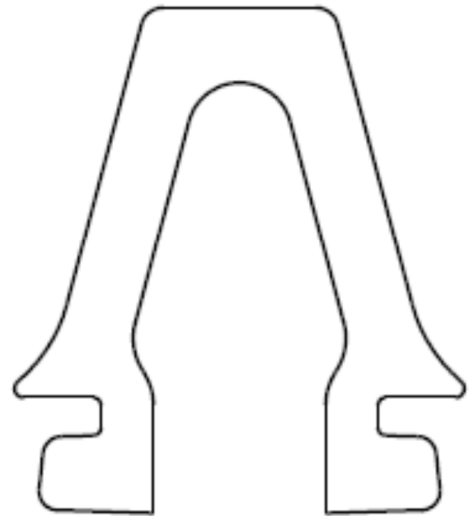
50 mm Flat Tyre



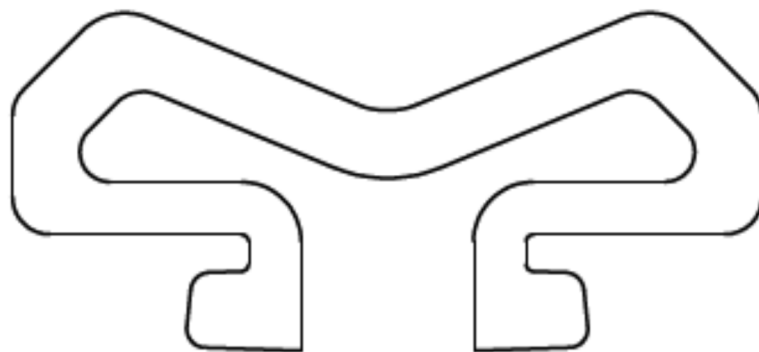
70 mm "V" Tyre



95 mm "V" Tyre



20 mm Wedge Tyre



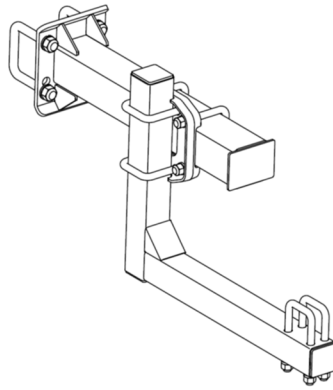
100 mm W Tyre

**SEMI PNEUMATIC TYRE PROFILES (Actual Size on A4)**

*Not sure what kit part number you need? Or what options are available for a particular machine? Use one of our online building tools for Seeding Kits and Presswheels which will work it all out for you! [www.agmaster.com.au](http://www.agmaster.com.au)*

## **Fixed Extension Arm**

These Kits bolt onto rear frame of the machine and provide an adjustable position for the mount bar to which the Presswheel bolts. Supplied with all bolts, nuts and U Bolts.

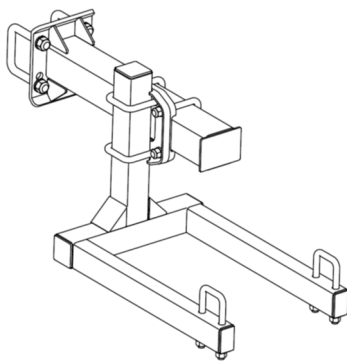


| Part No |                     |  | <u>Price</u> |            |
|---------|---------------------|--|--------------|------------|
|         |                     |  | <i>Exc</i>   | <i>Inc</i> |
| FEO04   | Fixed Extension Arm | Suits 100 x 100 frame                        | \$450.00     | \$495.00   |
| FEO05   | Fixed Extension Arm | Suits 75 x 75 frame                          | \$450.00     | \$495.00   |
| FEO08   | Fixed Extension Arm | Suits 75 x 75 diamond frame (shearer)        | \$450.00     | \$495.00   |
| FEO00   | Fixed Extension Arm | To fit in front of existing Agmaster Harrows | \$450.00     | \$495.00   |

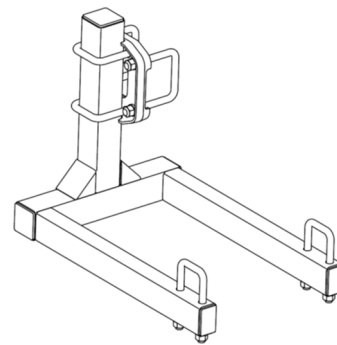
Requires XFE4032 Rear Mount Plate on end of FE4030 Main Arm

## **Fixed Extension Arm With Double Outrigger**

For short sections of Folding Machines ie. 7ft or less with a maximum 10 Presswheel Modules. Typically used on outer wings of Double Fold Machines



FEDxx

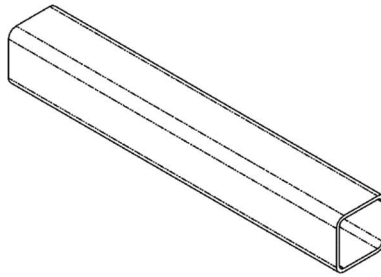


FEL4015

| Part No  |   |                                       |          |          |
|----------|---|---------------------------------------|----------|----------|
| FED04    | Fixed Extension Arm with Double Outrigger   | Suits 100 x 100 frame                 | \$600.00 | \$660.00 |
| FED05    | Fixed Extension Arm with Double Outrigger   | Suits 75 x 75 frame                   | \$600.00 | \$660.00 |
| FED08    | Fixed Extension Arm with Double Outrigger   | Suits 75 x 75 diamond frame (Shearer) | \$600.00 | \$660.00 |
| FED00    | Fixed Extension Arm with Double Outrigger   | To fit in front of Agmaster Harrows   | \$600.00 | \$660.00 |
| FEL 4015 | Double Outrigger for existing FE4030 or Harrow Tele Arm                             |                                       | \$350.00 | \$385.00 |
|          | (If using FEL4015 on Harrow Tele Arm also buy HS3050 x 1, P18L x 2) Per set HSP3050 |                                       | \$ 16.00 | \$ 17.60 |

Not sure what kit part number you need? Or what options are available for a particular machine? Use one of our online building tools for Seeding Kits and Presswheels which will work it all out for you! [www.agmaster.com.au](http://www.agmaster.com.au)

## Mounting Bar



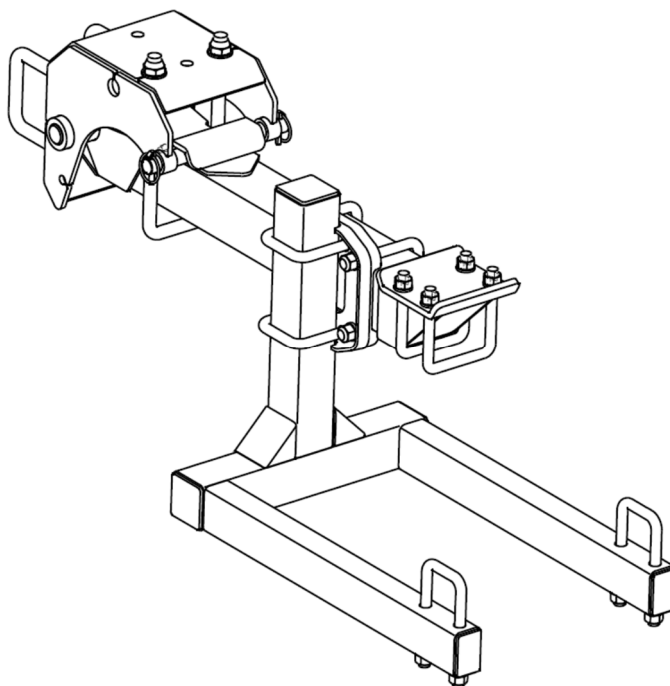
| PartNo           |   | <u>Price</u>             |            |
|------------------|---|--------------------------|------------|
|                  |   | <i>Exc</i>               | <i>Inc</i> |
| RH65654 x length | e.g.: RHS 65mm x 65mm x 4mm x 3.5m long<br>Duragal – cut and capped | <i>per metre</i> \$45.00 | \$49.50    |

**NOTE:** Agmaster will only supply RHS to customers collecting from Welshpool Warehouse due to freight issues with such long parts. All other customers to source locally

|      |  |        |        |
|------|--|--------|--------|
| CA65 | <b>Cap 65mm Square Insert</b>  | \$8.00 | \$8.80 |
|      | These plastic knock-in caps enclose the end of the above RHS<br>(Included in mounting bar price) |        |        |

## Telescopic Extension Arm

These kits are used when there is a requirement to interchange Presswheels and Harrows into the same tele arm arrangement.

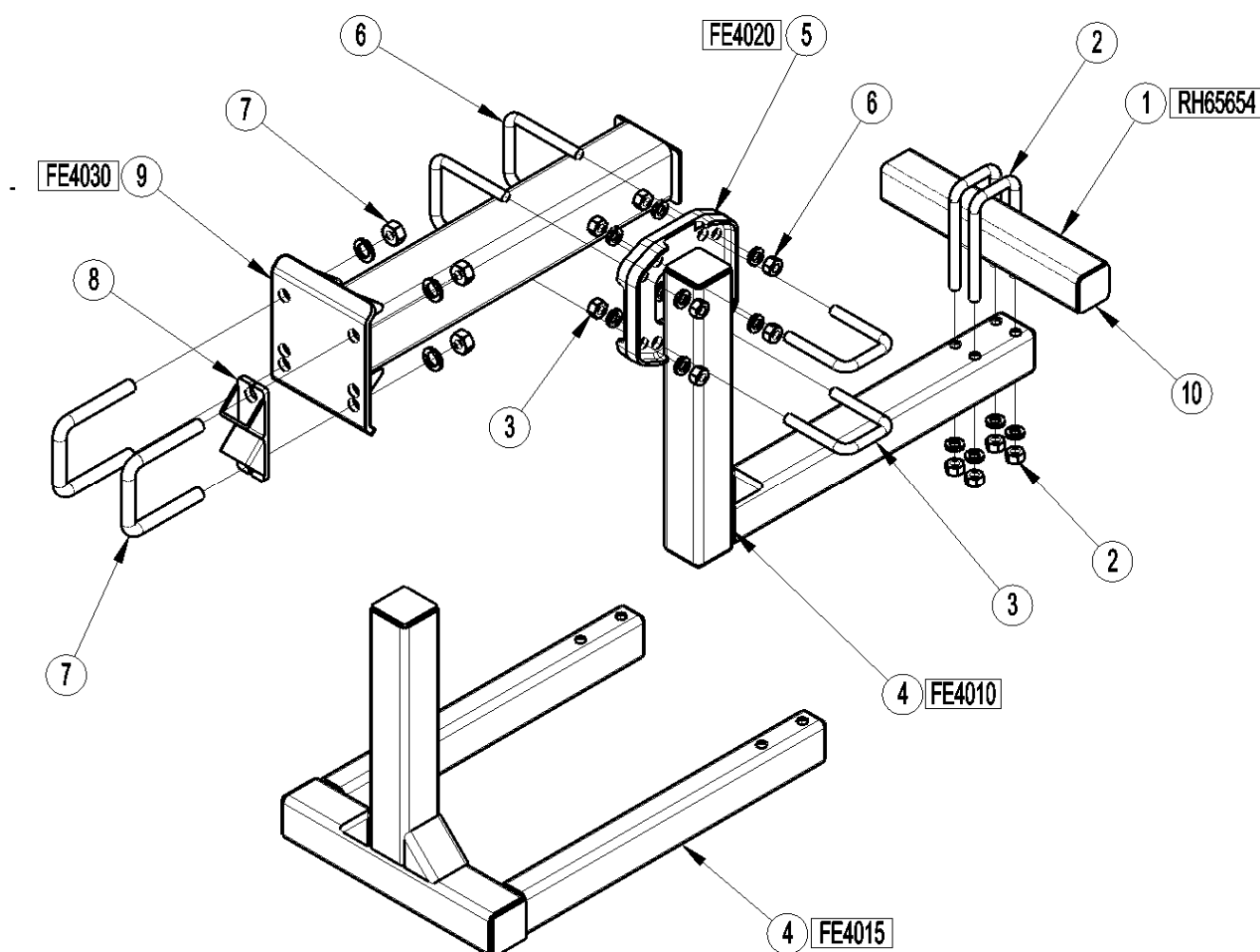


|                |  | <u>Price</u> |            |
|----------------|--|--------------|------------|
|                |  | <i>Exc</i>   | <i>Inc</i> |
| <b>TPO04</b>   | Telescopic Arm Presswheel Extension & Outrigger, 100 x 100 frame                                   | \$950.00     | \$1,045.00 |
| <b>TPO05</b>   | Telescopic Arm Presswheel Extension & Outrigger, 75 x 75 frame                                     | \$950.00     | \$1,045.00 |
| <b>TPO08</b>   | Telescopic Arm Presswheel Extension & Outrigger, 75 x 75 diamond frame                             | \$950.00     | \$1,045.00 |
| <b>FEL4015</b> | <b>Double Outrigger for existing FE4030 or Harrow Tele Arm</b> (see diagram <a href="#">pg47</a> ) | \$350.00     | \$385.00   |
|                | (If using FEL4015 on Harrow Tele Arm also buy HS3050 x 1, PI8L x 2) Per set <b>HSP3050</b>         | \$ 16.00     | \$ 17.60   |

Not sure what kit part number you need? Or what options are available for a particular machine? Use one of our online building tools for Seeding Kits and Presswheels which will work it all out for you! [www.agmaster.com.au](http://www.agmaster.com.au)

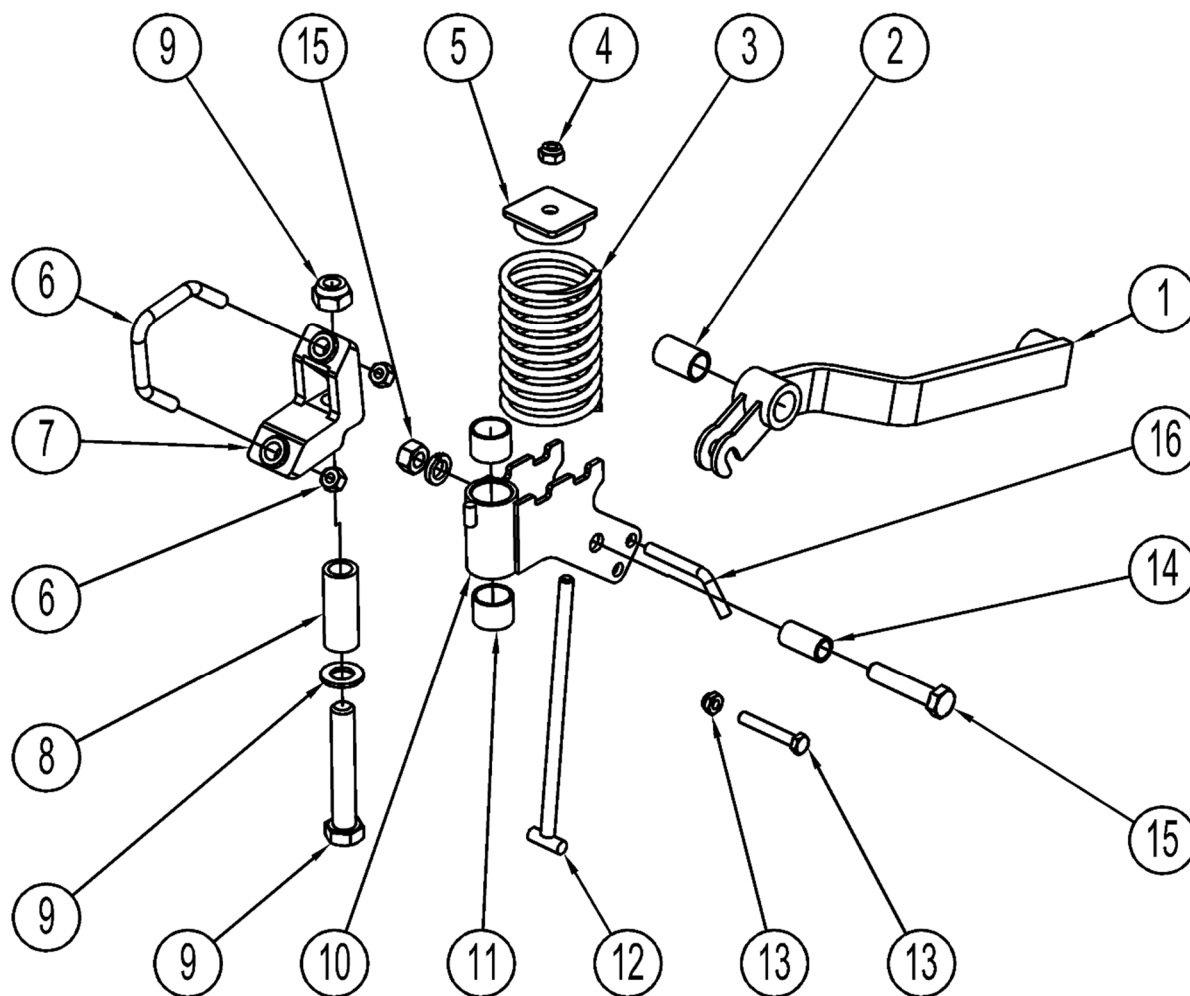
## PRESSWHEEL COMPONENTS

### FIXED EXTENSIONS



| Ref | Part No        | Description                  | Qty | Remarks                            | Prices       |              |
|-----|----------------|------------------------------|-----|------------------------------------|--------------|--------------|
|     |                |                              |     |                                    | Exc          | Inc          |
| 1   | <b>RH65654</b> | RHS 65 mm x 65 mm x 4 mm     | AR  | length to suit                     | \$ 45.00/mtr | \$ 49.50/mtr |
| 2   | <b>UBN4002</b> | U Bolt – M16, Nuts & Washers | 2   |                                    | \$ 10.00     | \$ 11.00     |
| 3   | <b>UBN4003</b> | U Bolt – M16, Nuts & Washers | 2   |                                    | \$ 10.00     | \$ 11.00     |
| 4   | <b>FE4010</b>  | L Frame                      | 1   |                                    | \$140.00     | \$154.00     |
| or  | <b>FE4015</b>  | Double L Frame               | 1   | refer <b>page 47</b> for reference | \$290.00     | \$319.00     |
| 5   | <b>FE4020</b>  | Clamp plate                  | 1   |                                    | \$ 30.00     | \$ 33.00     |
| 6   | <b>UBN3002</b> | U Bolt – M16, Nuts & Washers | 2   |                                    | \$ 15.00     | \$ 16.50     |
| 7   | <b>UBN3004</b> | UBolt - M20, Nuts & Washers  | 2   | for 100 mm Square RHS              | \$ 20.00     | \$ 22.00     |
|     | <b>UBN3005</b> | UBolt – M20, Nuts & Washers  | 2   | for 75mm Square RHS                | \$ 20.00     | \$ 22.00     |
|     | <b>UBN3006</b> | UBolt – M20, Nuts & Washers  | 2   | for RHS set on diagonal            | \$ 22.00     | \$ 24.20     |
| 8   | <b>HS3080</b>  | Clamp Plate                  | 2   | for RHS set on diagonal            | \$ 15.00     | \$ 16.50     |
| 9   | <b>FE4030</b>  | Extension                    | 1   |                                    | \$220.00     | \$242.00     |
| 10  | <b>CA65</b>    | Cap – 65mm Square Insert     | 2   | to cap ends of Item 1              | \$ 8.00      | \$ 8.80      |

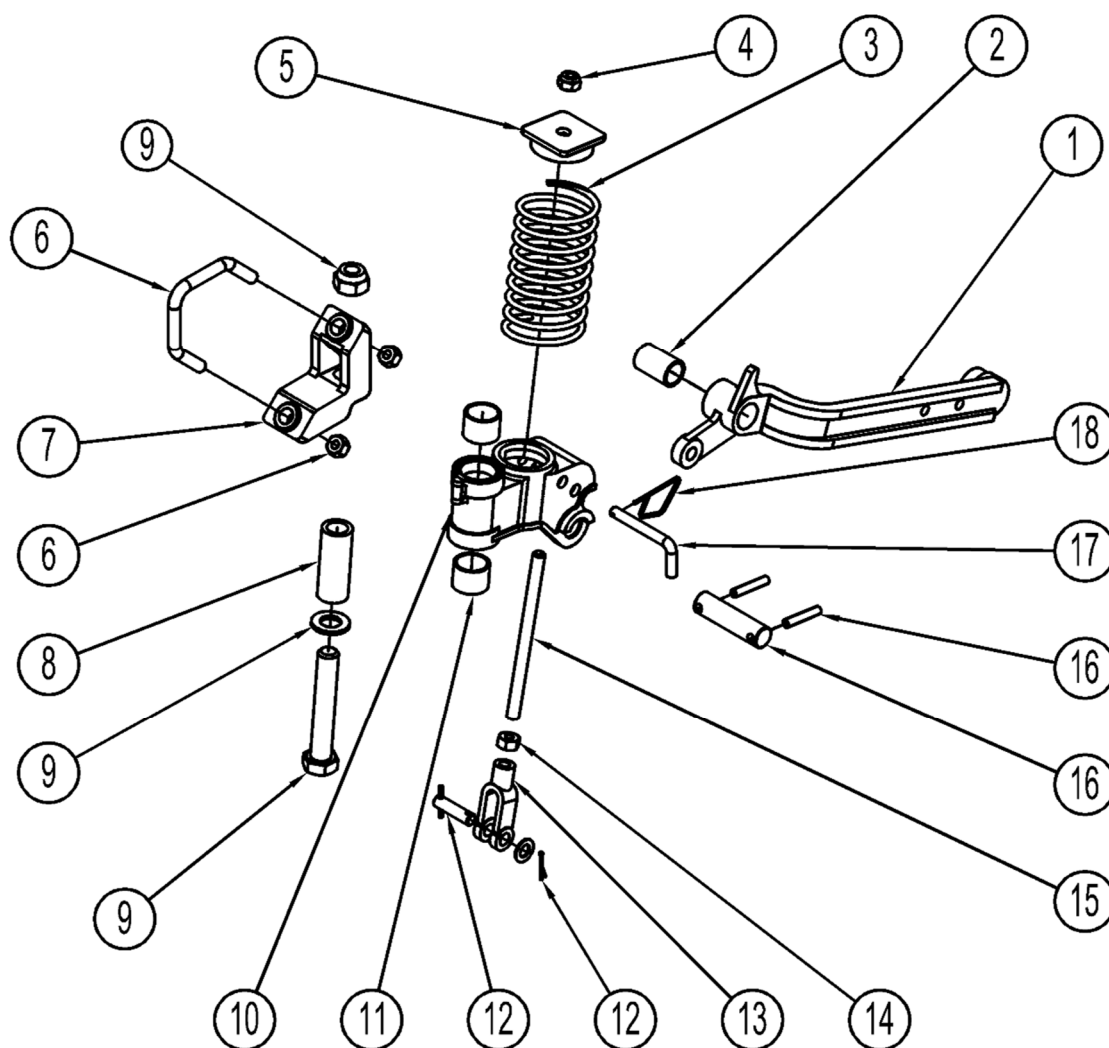
*Not sure what kit part number you need? Or what options are available for a particular machine? Use one of our online building tools for Seeding Kits and Presswheels which will work it all out for you! [www.agmaster.com.au](http://www.agmaster.com.au)*



**Note:** This is for Presswheels up to 2002. For 2003 onwards see following pages

| Ref | Part No   | Description                        | Qty | Remarks                         | Prices    |           |
|-----|-----------|------------------------------------|-----|---------------------------------|-----------|-----------|
|     |           |                                    |     |                                 | Exc       | Inc       |
| 1   | PW4270    | Jump Arm 2002                      | 1   | Obsolete                        | \$ --.--- | \$ --.--- |
| 2   | PW4276    | Presswheel Jump Arm Bush 2002/03   | 1   |                                 | \$ 4.00   | \$ 4.40   |
| 3   | SP4011    | Spring 165 x 80                    | 1   |                                 | \$15.00   | \$16.50   |
|     | SP4012    | Optional Inner Spring 144 x 60     | 1   |                                 | \$15.00   | \$16.50   |
| 4   | NU12MNY   | Nylock Nut – M12                   | 1   |                                 | \$ 0.40   | \$ 0.44   |
| 5   | PW4580    | Spring Cap                         | 1   |                                 | \$ 4.00   | \$ 4.40   |
| 6   | VBN4001   | V Bolt M12 90x100ctr, Nut & Washer | 1   |                                 | \$ 5.00   | \$ 5.50   |
| 7   | PW4255    | Pivot Mount 2002/03                | 1   | Obsolete but Upgradable (PWU45) |           |           |
| 8   | PW4265    | Track Pivot Spacer 77 x 30 2002/03 | 1   |                                 | \$ 3.50   | \$ 3.85   |
| 9   | BNW20M120 | Bolt – M20 x 120, Nut, Washer      | 1   |                                 | \$ 8.00   | \$ 8.80   |
| 10  | PW4260    | Track Pivot 2002                   | 1   | Obsolete                        | \$ --.--- | \$ --.--- |
| 11  | PW4266    | Track Pivot Bush 25 x 35 2002/03   | 2   |                                 | \$ 4.00   | \$ 4.40   |
| 12  | PW4267    | T Bolt M12 x 250                   | 1   |                                 | \$ 7.00   | \$ 7.70   |
| 13  | BON10M65  | Bolt – M10 x 65, Nut               | 1   | Not stocked by Agmaster         | \$ --.--- | \$ --.--- |
| 14  | PW4275    | Jump Arm Spacer 42 x 22 2002/03    | 1   |                                 | \$ 2.50   | \$ 2.75   |
| 15  | BNW16M90  | Bolt – M16 x 90, Nut, Washer       | 1   |                                 | \$ 5.00   | \$ 5.50   |
| 16  | PW4590    | Locking Pin                        | 1   |                                 | \$ 3.00   | \$ 3.30   |
|     | PI3MIN    | R Clip – B9 or Min clip            | 1   |                                 | \$ 1.20   | \$ 1.32   |
|     | PWU45     | Mount Upgrade PW4255 to PW4450     | 1   | Includes Sleeve/Bolt            | \$55.00   | \$60.50   |

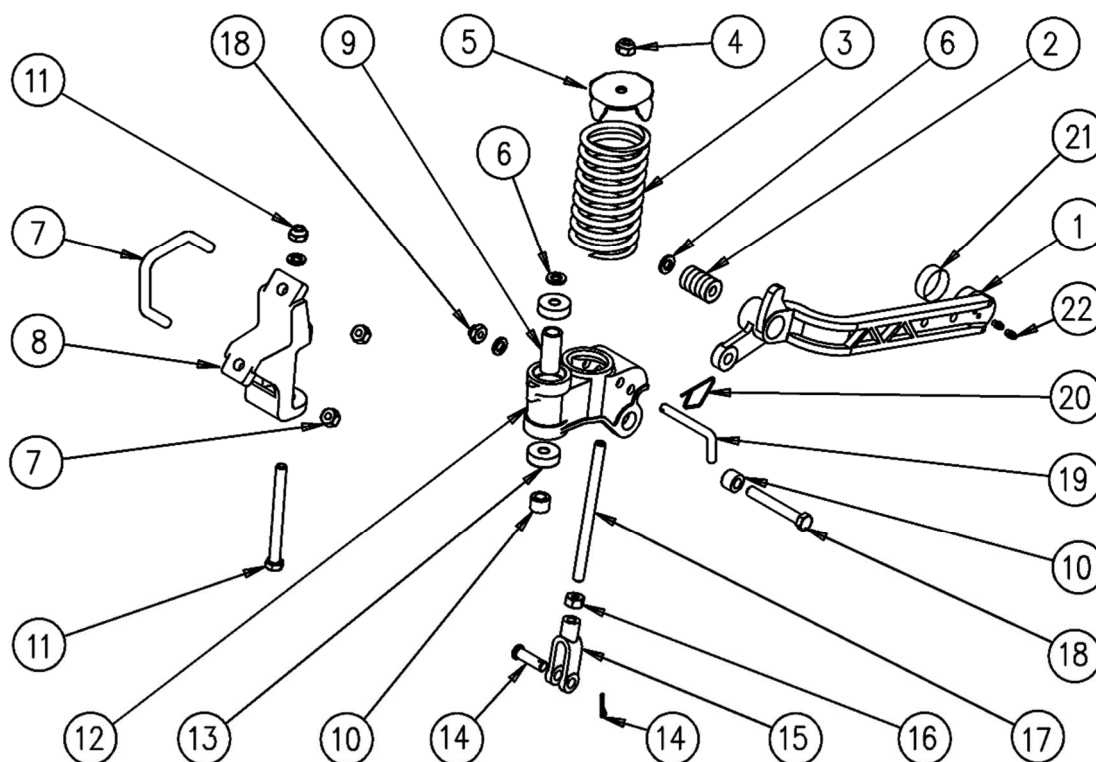
*Not sure what kit part number you need? Or what options are available for a particular machine? Use one of our online building tools for Seeding Kits and Presswheels which will work it all out for you! [www.agmaster.com.au](http://www.agmaster.com.au)*



**Note:** This is for 2003 Model Presswheels. For 2004 model onwards see next page

| Ref | Part No   | Description                         | Qty | Remarks   | Prices  |         |
|-----|-----------|-------------------------------------|-----|---|---------|---------|
|     |           |                                     |     |   | Exc     | Inc     |
| 1   | PW4290    | Jump Arm 2003                       | 1   | Includes 1, 2   | \$70.00 | \$77.00 |
| 2   | PW4276    | Jump Arm Bush 41 x 27 2002/03       | 1   |   | \$ 4.00 | \$ 4.40 |
| 3   | SP4011    | Spring 165 x 80                     | 1   |   | \$15.00 | \$16.50 |
|     | SP4012    | Optional Inner Spring 144 x 60      | 1   |   | \$15.00 | \$16.50 |
| 4   | NU12MNY   | Nylock Nut – M12                    | 1   |   | \$ 0.40 | \$ 0.44 |
| 5   | PW4580    | Spring Cap                          | 1   |   | \$ 4.00 | \$ 4.40 |
| 6   | VBN4001   | V Bolt M12 90x 100ctr, Nut & Washer | 1   |   | \$ 5.00 | \$ 5.50 |
| 7   | PW4255    | Pivot Mount                         | 1   | Obsolete but upgradable (PWU45)                       |         |         |
| 8   | PW4265    | Track Pivot Spacer 77 x 30 2002/03  | 1   |   | \$ 3.50 | \$ 3.85 |
| 9   | BNW20M120 | Bolt – M20 x 120, Nut, Washer       | 1   |   | \$ 8.00 | \$ 8.80 |
| 10  | PW4280    | Track Pivot Mount 2003              | 1   | Includes 2 x Item 11<br>Obsolete when stock exhausted | \$70.00 | \$77.00 |
| 11  | PW4266    | Track Pivot Bush 25 x 35 2002/03    | 2   |   | \$ 4.00 | \$ 4.40 |
| 12  | PWS57     | Clevis Pin, Split Pin               | 1   |   | \$ 2.00 | \$ 2.20 |
| 13  | PW4560    | Clevis Yoke                         | 1   |   | \$16.00 | \$17.60 |
| 14  | NU12MZP   | Nut M12                             | 1   |   | \$ 0.30 | \$ 0.33 |
| 15  | PW4550    | Pressure Rod – M12                  | 1   |   | \$ 6.00 | \$ 6.60 |
| 16  | PWR4285   | Jump Arm Pin 85 x 22 2003           | 1   | Includes Roll Pins                                    | \$ 5.00 | \$ 5.50 |
| 17  | PW4590    | Locking Pin                         | 1   |   | \$ 3.00 | \$ 3.30 |
| 18  | PI3MIN    | R Clip – B9 or Min clip             | 1   |   | \$ 1.20 | \$ 1.32 |
|     | PWU45     | Mount Upgrade PW4255 to PW4450      | 1   | Includes Sleeve/Bolt                                  | \$55.00 | \$60.50 |

Not sure what kit part number you need? Or what options are available for a particular machine? Use one of our online building tools for Seeding Kits and Presswheels which will work it all out for you! [www.agmaster.com.au](http://www.agmaster.com.au)



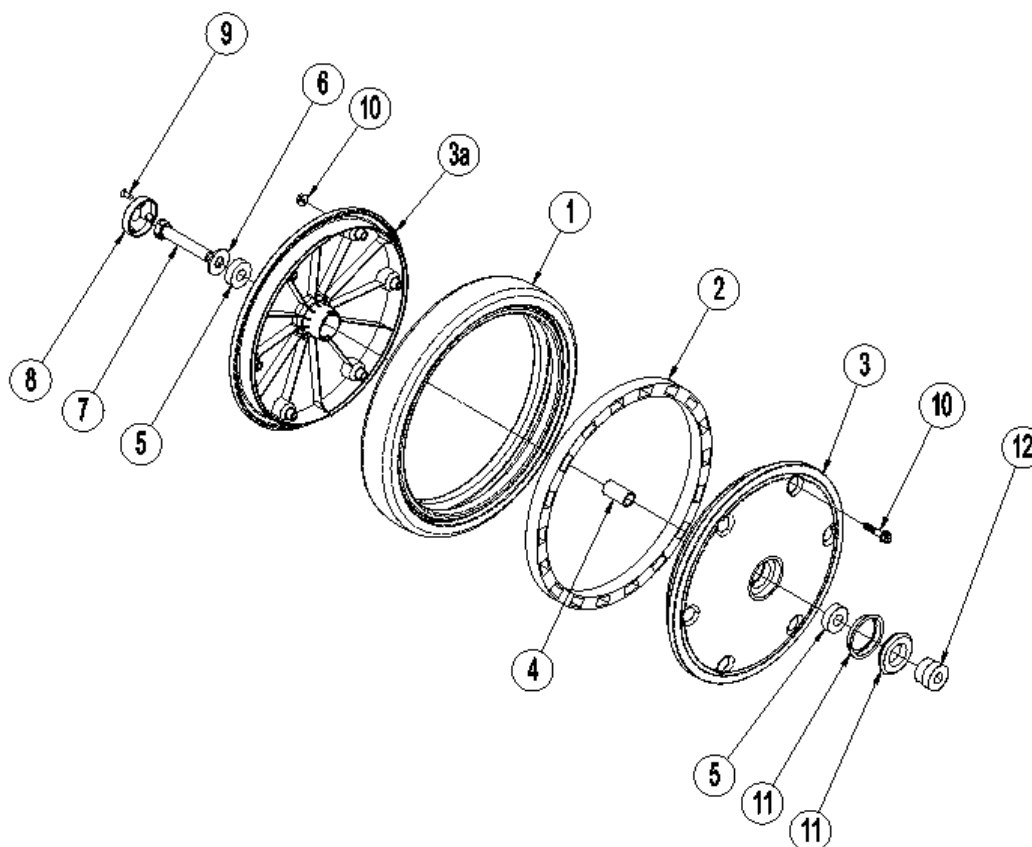
**Note: This**

|     |   |  |     |  | <u>Prices</u>   |                 |
|-----|---|--|-----|--|-----------------|-----------------|
| Ref | Part No                                     | Description  | Qty | Remarks                                | Exc             | Inc             |
| 1   | <b>PW4420</b><br><b>OR</b><br><b>PW4405</b> | <u>Current</u> Jump Arm 2005 Onwards<br>with Bearings<br>Jump Arm <u>2004 Only Model</u><br>with Bearings & Sleeve | 1   | includes 1, 2, 22<br>includes 1, 2, 21 | <b>\$80.00</b>  | <b>\$88.00</b>  |
| 2   | <b>BE1228</b>                               | Bearing (6001-2RS)   | 5   |  | \$ 2.00         | \$ 2.20         |
| 3   | <b>SP4011</b>                               | Spring 165 x 80  | 1   |  | \$15.00         | \$16.50         |
|     | <b>SP4012</b>                               | Optional Inner Spring 144 x 60   | 1   |  | \$15.00         | \$16.50         |
| 4   | <b>NU12MNY</b>                              | Nylock Nut – M12   | 3   |  | \$ 0.40         | \$ 0.44         |
| 5   | <b>PW4580</b>                               | Spring Cap   | 1   |  | \$ 4.00         | \$ 4.40         |
| 6   | <b>PW4460</b>                               | Mount/Arm Washer 3 x 22  | 2   |  | \$ 0.60         | \$ 0.66         |
| 7   | <b>VBN4001</b>                              | V Bolt M12, Nut & Washer   | 1   |  | \$ 5.00         | \$ 5.50         |
| 8   | <b>PW4450</b>                               | Pivot Mount 2004   | 1   |  | \$40.00         | \$44.00         |
| 9   | <b>PW4480</b>                               | Track Pivot Bearing Spacer   | 1   |  | \$ 2.50         | \$ 2.75         |
| 10  | <b>PW4470</b>                               | Mount/Arm Spacer 15 x 22   | 2   |  | \$ 0.90         | \$ 0.99         |
| 11  | <b>BNW12M130</b>                            | Bolt – M12 x 130, Nut & Washer   | 1   |  | \$ 3.50         | \$ 3.85         |
| 12  | <b>PW4500</b>                               | Track Pivot with Bearings & Spacer   | 1   | includes 9,12,13                       | \$60.00         | \$66.00         |
| 13  | <b>BE1237</b>                               | Bearing (6301-2RS)   | 2   |  | \$ 3.00         | \$ 3.30         |
| 14  | <b>PWS57</b>                                | Clevis Pin, Split Pin  | 1   |  | \$ 2.00         | \$ 2.20         |
| 15  | <b>PW4560</b>                               | Clevis Yoke  | 1   |  | \$16.00         | \$17.60         |
| 16  | <b>NU12MZP</b>                              | Nut M12  | 1   |  | \$ 0.30         | \$ 0.33         |
| 17  | <b>PW4550</b>                               | Rod – M12  | 1   |  | \$ 6.00         | \$ 6.60         |
| 18  | <b>BNW12M85</b>                             | Bolt – M12 x 85, Nut & Washer  | 1   |  | \$ 2.50         | \$ 2.75         |
| 19  | <b>PW4590</b>                               | Locking Pin  | 1   |  | \$ 3.00         | \$ 3.30         |
| 20  | <b>PI3MIN</b>                               | R Clip – B9 or Min clip  | 1   |  | \$ 1.20         | \$ 1.32         |
| 21  | <b>PW4415</b>                               | Seal Wear Sleeve   | 1   | 2004 Model only                        | \$ 4.00         | \$ 4.40         |
| 22  | <b>GN6</b>                                  | Grease Nipple 6mm Stainless  | 2   | 2011 onwards Model only                | \$ 0.50         | \$ 0.55         |
|     | <b>PWS55</b>                                | Spring kit   | 1   | includes 3,4,5,14,15,16,17             | <b>\$45.00</b>  | <b>\$49.50</b>  |
|     | <b>PW4000</b>                               | Presswheel Assembly – No Wheel   | 1   | Not incl Item 7 and all items on p53   | <b>\$220.00</b> | <b>\$242.00</b> |

Not sure what kit part number you need? Or what options are available for a particular machine? Use one of our online building tools for Seeding Kits and Presswheels which will work it all out for you! [www.agmaster.com.au](http://www.agmaster.com.au)



## PRESSWHEELS PARTS, RIMS, SEALS



|   |                   |                                   |           |   | <u>Prices</u>   |                 |
|---|-------------------|-----------------------------------|-----------|---|-----------------|-----------------|
| Ref   | Part No           | Description                       | Qty       | Remarks   | Exc             | Inc             |
| 1   | <b>PW4300</b>     | Tyre – 100mm 'W'                  | 1         | Includes Item 2   | <b>\$100.00</b> | <b>\$110.00</b> |
|   | <b>PW4310</b>     | Tyre – 70 mm V                    | 1         | Includes Item 2   | <b>\$ 80.00</b> | <b>\$ 88.00</b> |
|   | <b>PW4320</b>     | Tyre – 95 mm V                    | 1         | Includes Item 2   | <b>\$ 80.00</b> | <b>\$ 88.00</b> |
|   | <b>PW4330</b>     | Tyre – 50 mm flat                 | 1         | Includes Item 2   | <b>\$ 80.00</b> | <b>\$ 88.00</b> |
|   | <b>PW4340</b>     | Tyre – 20mm wedge                 | 1         | Includes Item 2   | <b>\$100.00</b> | <b>\$110.00</b> |
| 2   | <b>PW4370</b>     | Spacer Ring                       | 1         |   | <b>\$ 10.00</b> | <b>\$ 11.00</b> |
| 3   | <b>PW4350</b>     | Rim Half – Seal Side with bearing | 1         | This half has steel ring in it                            | <b>\$ 34.00</b> | <b>\$ 37.40</b> |
| 3a  | <b>PW4360</b>     | Rim Half – Cap Side with bearing  | 1         |   | <b>\$ 26.00</b> | <b>\$ 28.60</b> |
| 4   | <b>PW4380</b>     | Bearing Spacer                    | 1         |   | <b>\$ 2.50</b>  | <b>\$ 2.75</b>  |
| 5   | <b>BE1740</b>     | Bearing (6203-2RS)                | 2         |   | <b>\$ 4.00</b>  | <b>\$ 4.40</b>  |
| 6   | <b>WA16L</b>      | Washer M16 Lock Ribbed            | 1         |   | <b>\$ 1.00</b>  | <b>\$ 1.10</b>  |
| 7   | <b>BO16M90</b>    | Bolt – M16 x 90                   | 1         | Secures Wheel to Arm                                      | <b>\$ 4.00</b>  | <b>\$ 4.40</b>  |
| 8   | <b>PW4390</b>     | Cap                               | 1         | From 2003 – Takes 3 x SC825                               | <b>\$ 4.00</b>  | <b>\$ 4.40</b>  |
|   | <b>PW4251</b>     | Cap – Grey                        |           | Knock in type for 2002 model                              | <b>\$ 4.00</b>  | <b>\$ 4.40</b>  |
| 9   | <b>SC825</b>      | Self tapping Screw                | 3         | 8 gauge x 25mm countersunk                                | <b>\$ 0.20</b>  | <b>\$ 0.22</b>  |
| 10  | <b>BON8M35F</b>   | Bolt 8M x 35 Flanged, Nut         | 6 per rim |   | <b>\$ 0.60</b>  | <b>\$ 0.66</b>  |
| 11  | <b>SE36P6641</b>  | Seal P6641 & Ring                 | 1         | From 2005 – use on PW4420 arm                             | <b>\$ 5.00</b>  | <b>\$ 5.50</b>  |
|   | <b>OR</b>         |                                   |           |   |                 |                 |
|   | <b>SE36PR6518</b> | Seal TC1.437                      | 1         | From 2003/04 – use on PW4405 arm                          | <b>\$ 4.00</b>  | <b>\$ 4.40</b>  |
| <i>Please note SE36PR5618 is a very uncommon seal, please check with Agmaster before ordering if not sure</i> |                   |                                   |           |   |                 |                 |
| 12  | <b>PW4440</b>     | 30 mm Clearance Spacer -optional  | 1         | To increase clearance between tyre & arm for mud shedding | <b>\$15.00</b>  | <b>\$ 16.50</b> |
|   | <b>BO16M120</b>   | Bolt M16 x 120mm                  | 1         | Required with above spacer PW4440 in place of BO16M90     | <b>\$ 4.00</b>  | <b>\$ 4.40</b>  |
|   | <b>PW4200</b>     | 100 mm 'W' wheel assembly         | 1         | Above Assembly Minus 6, 7, 8, 9                           | <b>\$170.00</b> | <b>\$187.00</b> |
|   | <b>PW4210</b>     | 70 mm V wheel assembly            | 1         | Above Assembly Minus 6, 7, 8, 9                           | <b>\$150.00</b> | <b>\$165.00</b> |
|   | <b>PW4220</b>     | 95 mm V wheel assembly            | 1         | Above Assembly Minus 6, 7, 8, 9                           | <b>\$150.00</b> | <b>\$165.00</b> |
|   | <b>PW4230</b>     | 50 mm flat wheel assembly         | 1         | Above Assembly Minus 6, 7, 8, 9                           | <b>\$150.00</b> | <b>\$165.00</b> |
|   | <b>PW4240</b>     | 20 mm wedge wheel assembly        | 1         | Above Assembly Minus 6, 7, 8, 9                           | <b>\$170.00</b> | <b>\$187.00</b> |

Not sure what kit part number you need? Or what options are available for a particular machine? Use one of our online building tools for Seeding Kits and Presswheels which will work it all out for you! [www.agmaster.com.au](http://www.agmaster.com.au)