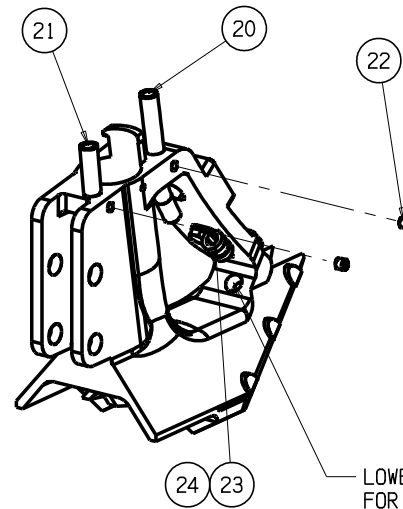


### LIQUID N & WETTER PARTS ATTACHMENT

1. Insert tube (20) upwards into seeker boot (7) and secure with grub screw (22), align lower section so liquid N tube (not supplied) will clear upper nut (5) and go through P clamp (23).
2. Insert tube (21) into seeker boot (7) (offset only) ensure it full engages into the lower hole and secure with grub screw (22).
3. Fit P clamp (23) to seeker boot (7) and secure with bolt (24).  
Align P clamp (23) so liquid N tube (not supplied) will clear lower nut (5) and fit into lower front hole of boot (7). Feed liquid tube through boot to desired depth.



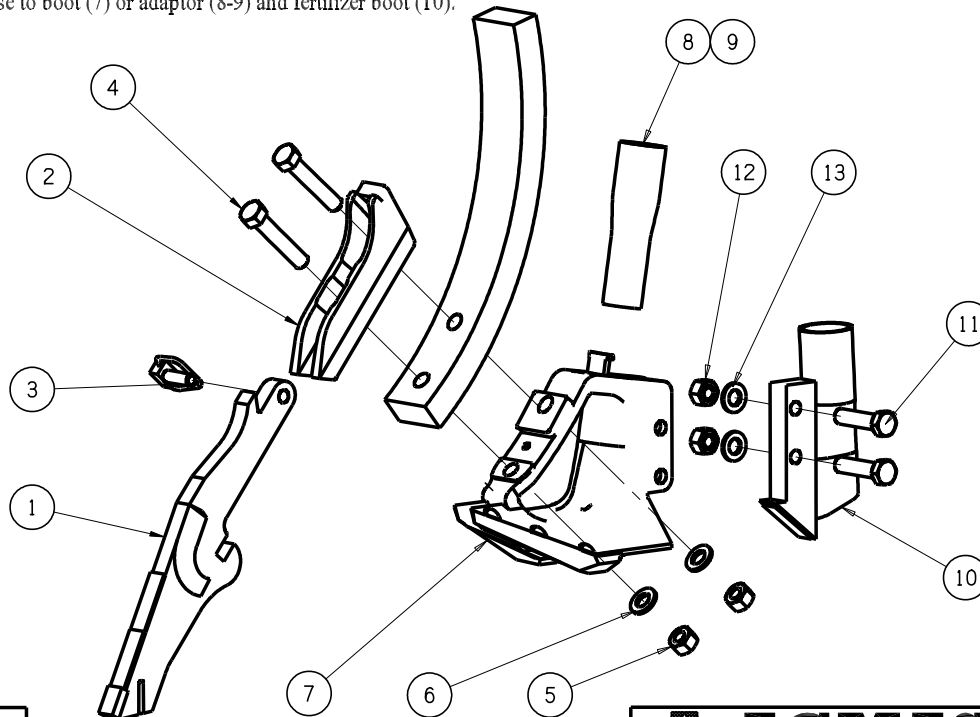
RETENSION ALL BOLTS AFTER 8 hrs WORKING

24	1	B06M16S	BOLT M6 X 16
23	1	PC6S	P CLAMP
22	2	GS6M6S	GRUB SCREW M6 X 6
21	1	SL5520	TUBE - WETTER
20	1	SL5510	TUBE - LIQUID N

### LIQUID N & WETTER PARTS

### POINT AND BOOT

1. Make delivery hose adaption to seeker boot (7).
  - \* 32 OD hose will fit securely into the seeker boot hole and can be secured with a hose clamp (not supplied) or short Tek screw (not supplied).
  - \* 32 ID hose can be adapted to the seeker boot with adaptor (8).
  - \* 35 OD AND 38 ID hose can be adapted with adaptor (9).
2. If using optional fertilizer boot (10) secure this to the seeker boot with items 11 & 12.  
For liquid fertilizer or liquid wetter see separate instructions above.
3. Loosely assemble holder (2) and seeker boot (7) to tyne using items 4, 5, & 6.  
Ensure domed washer (6) is oriented with dome side against nut (5).
4. Secure point (1) into holder (2) with retainer clip (3) and ensure leading edge of seeker boot wings do not interfere with point.
5. Tighten tyne nuts (5)
6. Secure delivery hose to boot (7) or adaptor (8-9) and fertilizer boot (10).



13	2	WA12D	DOMED WASHER 1/2"
12	2	NU12CL	CONELock NUT 1/2" UNF
11	2	B0122	BOLT 1/2" UNF X 2"
10	1	SF5410	FERTILIZER BOOT
9	1	PA5610	ADAPTOR - 35 ID & 38 OD HOSE
8	1	PA5260	ADAPTOR - 32 ID HOSE
7	1	SB51XX	SEEKER BOOT - OFFSET
7	1	SB52XX	SEEKER BOOT - TWIN
6	2	WA12D	DOMED WASHER 1/2"
5	2	NU12CL	CONELock NUT 1/2" UNF
4	AR	B0123	BOLT 1/2" UNF X 3"
4	AR	B012234	BOLT 1/2" UNF X 2 3/4"
4	AR	B012212	BOLT 1/2" UNF X 2 1/2"
3	1	PI10L	LYNCH PIN
2	1		HOLDER - TO SUIT TYNE
1	1		POINT - TO SUIT TYNE
REF	QTY	PART No	DRG SIZE DESCRIPTION

ALL RIGHTS STRICTLY RESERVED  
REPRODUCTION OR ISSUE TO THIRD  
PARTIES IN ANY FORM WHATEVER  
IS NOT PERMITTED WITHOUT WRITTEN  
AUTHORITY FROM AGMASTER.

**AGMASTER**  
2067 MARSHALL ST. COLLIE WA 6225

ASSY INSTRUCTIONS  
POINTS & SEEKER BOOTS

AI1080